



**TOP-RUNNING,
DOUBLE-GIRDER,
FIXED-AXLE,
END TRUCKS —
3, 5 & 10 TON CAPACITIES**

SERIES 440

Specifications
And Dimensions

APPLICATION:

- Dual Motor Type Cranes

FEATURES:

- Bolted-Girder Connection Plates
- Flange Type Gear Reducer Mounting Plates
- Double Flange Wheels for 40# Thru 80# A.S.C.E. Rail
- Hardened Wheels (All Capacities)
- For Heavy Duty Crane Applications

END TRUCK KITS

PRODUCT NUMBER	PRODUCT NUMBER (BRONZE WHEELS)	MAX. WHEEL CAPACITY (a)	GIRDER SPACE	RAIL SIZE	TRUCK WEIGHT (b)	Each End Truck Kit includes: (2) End Trucks (2) Pinions (2) Keys (2) Retaining Rings (1) Instruction and Parts Manual
4400220	4400320	9,300 lbs.	60"	40#	878 lbs.	
4400230	4400330	9,300 lbs.	78"	40#	947 lbs.	
4400240	4400340	15,500 lbs.	60"	40-80#	1210 lbs.	
4400250	4400350	15,500 lbs.	78"	40-80#	1302 lbs.	

(a) Calculated Wheel Loads must include:

1. Live load impact allowance of 1/2% of lifting speed in FPM, but not less than 15% when used with an electric powered hoist.
2. Dead load impact allowance of 10% (includes weight of crane, hoist, and attachments.)

(b) Truck Weight is per pair of end trucks.

BUMPER KITS

PRODUCT NUMBER	SPEED	MAXIMUM WHEEL CAPACITY	Each Bumper Kit includes: (4) Bumpers (4) Washers (4) Lockwashers (4) Nuts
6450010	50 FPM	15,500 LB.	
	75 FPM	9,300 LB.	
6450020	75 FPM	15,500 LB.	
	110 FPM	9,300 LB.	
6450030	110 FPM	15,500 LB.	

CAPACITY PLATES

PRODUCT NUMBER	DIMENSIONS
6400310	12" x 12"
6400320	24" x 24"
Quantity (2) Plates needed per crane.	

CONSTRUCTION FEATURES

- All welding done to ANSI/AWS D14.1.
- Structural members prime painted with red oxide.
- Wheel Material: 1045 steel.
- Wheel Hardness: Tread surface hardened to 375-425 Brinnell
- One piece wheel/wheel gear: Tapered Tread.
- "Life-Time" sealed wheel bearings.
- Integral rail sweeps: drilled for bumper installation (bumpers optional).
- Motor/reducer mounting plates—no shimming required.

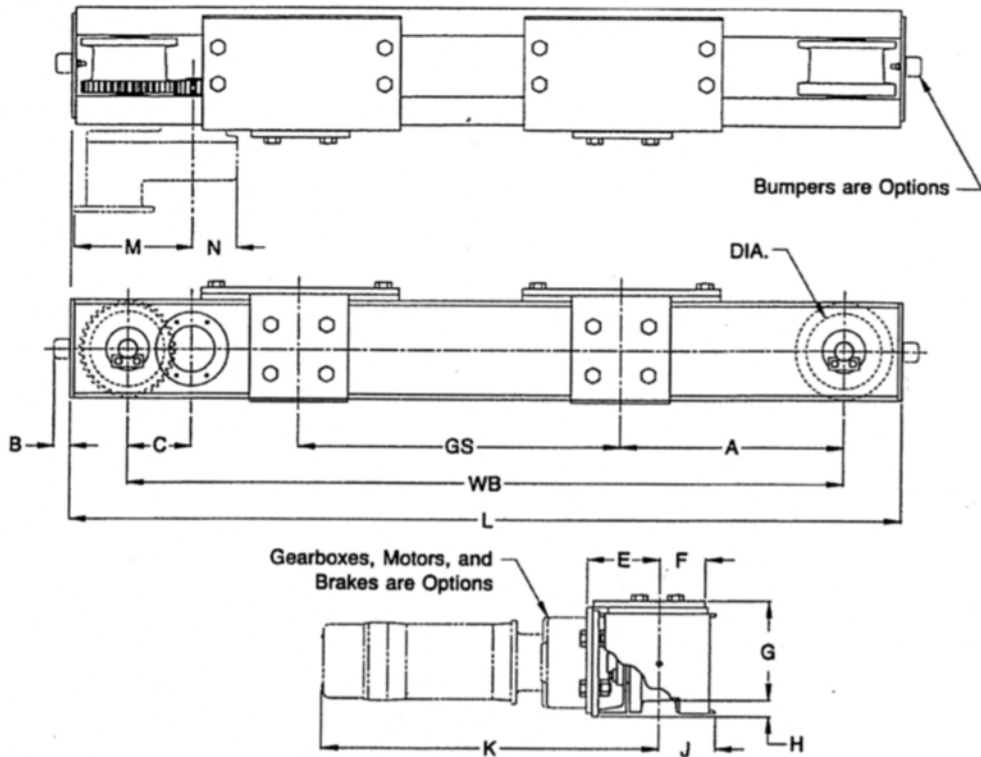
OTHER CRANE ITEMS AVAILABLE

- For Dual Motor Drives use ACCO-WRIGHT Drive Kit Product Number 4050xxx.
- For Crane Bridge Controls use ACCO-WRIGHT Control Panel Kit Product Number 4030xxx.
- Bronze Wheels available, contact Acco Chain & Lifting Products.

TYPICAL CRANES

MAX. WHEEL CAPACITY	TYP. CRANE CAPACITY	TYP. CRANE SPAN	Typical crane capacities and spans are for reference purposes only. Actual capacity and span must be determined by the crane manufacturer, based upon actual design loads and weights that will not exceed the allowable maximum wheel capacity.
9,300 lbs.	3 Ton	55 Ft.	
	5 Ton	35 Ft.	
15,500 lbs.	5 Ton	55 Ft.	
	7½ Ton	55 Ft.	
	10 Ton	40 Ft.	

END TRUCK DIMENSIONS



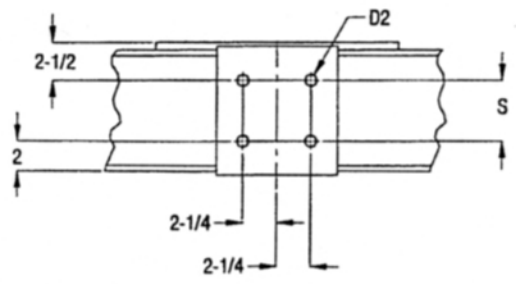
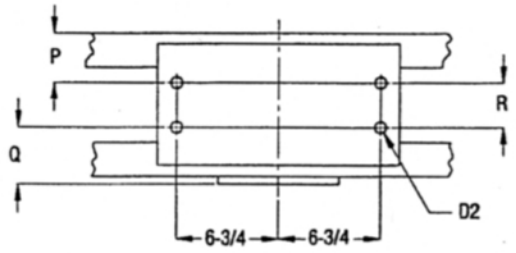
PRODUCT NUMBER	L	WB	GS	A	C	DIA.	E	F	G	H	J	M	N
4400220	105.50"	96"	60"	18"	5.32"	6"	5.88"	3.69"	8.00"	1.25"	4.56"	9.85"	3.63"
4400230	123.50"	114"	78"	18"	5.32"	6"	5.88"	3.69"	8.00"	1.25"	4.56"	9.85"	3.63"
4400240	107.50"	96"	60"	18"	6.32"	8"	6.56"	4.00"	10.00"	1.25"	5.25"	9.85"	3.63"
4400250	125.50"	114"	78"	18"	6.32"	8"	6.56"	4.00"	10.00"	1.25"	5.25"	9.85"	3.63"

B	Product No. 6450010 Bumper Kit	1.34"
	Product No. 6450020 Bumper Kit	1.66"
	Product No. 6450030 Bumper Kit	2.13"

K	End Truck Numbers	Single Speed Drives	25.38"
	4400220 or 4400230	Two Speed Drives	27.38"
	End Truck Numbers	Single Speed Drives	26.25"
	4400240 or 4400250	Two Speed Drives	28.25"

GIRDER CONNECTION PLATE DIMENSIONS

PRODUCT NUMBER	D2	P	Q	R	S
4400220	.78"	3.25"	3.75"	2.94"	4"
4400230	.78"	3.25"	3.75"	2.94"	4"
4400240	.78"	3.63"	4.13"	3.56"	6"
4400250	.78"	3.63"	4.13"	3.56"	6"



⚠ WARNING

Only competent engineering and fabrication personnel, familiar with standard crane design and fabrication practices, should be employed to design and fabricate cranes using this equipment for the purposes of determining appropriate compatible equipment and product applications. Acco disclaims any responsibility for the quality of design and workmanship employed in the design and fabrication of a crane or other system using this equipment or the sufficiency of the structure in which and to which this equipment is to be installed or the sufficiency of the crane or system to sustain any particular load that may be imposed upon it. Contact Acco Chain & Lifting Products for additional information if necessary.

GENERAL CONDITIONS OF WARRANTY

WARRANTIES: The Seller warrants to the original using Buyer thereof that the goods sold under this Agreement are free from defects in workmanship and materials for a period of one year from the date of shipment to the original using Buyer. No other express warranties are given and no affirmation of Seller or Seller's agents, by word or action, shall constitute a warranty. No warranty is made for components and accessories made by others when such items are warranted by their respective manufacturers.

Installation or operation of the equipment in any manner other than as recommended by Seller, shall void the warranty.

Any variations in details between the goods furnished herein and those covered in Buyer's specifications are due to standards of manufacture not to be construed as exceptions to the specifications.

DISCLAIMER OF IMPLIED WARRANTIES:

- (a) SELLER MAKES NO WARRANTY OF MERCHANTABILITY IN RESPECT TO THE GOODS SOLD UNDER THIS AGREEMENT.
- (b) This sale is made WITHOUT ANY WARRANTY BY SELLER THAT THE GOODS ARE SUITABLE FOR ANY PARTICULAR PURPOSE.
- (c) Buyer hereby waives all other warranties, guarantees, obligations, liabilities, rights, and remedies arising by law or otherwise including any obligation or liability of the Seller arising from tort, and Buyer shall indemnify Seller from any liability, loss, damage, or claim arising from Buyer's tortious use of the goods sold hereby.

REMEDIES:

- (a) Under no conditions shall any goods be returned to Seller without its prior written consent.
- (b) The Buyer's sole and exclusive remedy for breach of any warranty is limited to Seller furnishing, at its expense, duplicate or repaired parts F.O.B. Seller's plant with installation at Buyer's expense if discovery of a claimed defect occurs during the allowable warranty period, and if Seller's inspection determines a defect exists.
- (c) The quantity of material shown by invoice shall in all cases govern settlement for shortages, unless notice of shortage, appropriately documented, is given to the carrier and the Seller upon delivery by the Carrier.
- (d) Claims for errors, deficiencies or imperfections shall be deemed waived by the Buyer unless Seller is notified in writing of the basis of such claims within 10 days after discovery of claimed defect and such discovery occurs within the warranted period.
- (e) Neither Buyer nor User shall be entitled under this Agreement to recover from Seller any incidental or consequential damages of any nature including but not limited to the cost of any labor expended by others in connection with the goods sold hereby by reason of any alleged nonconformity or breach of warranty on the part of the Seller, nor costs of material or account thereof, nor any lost profits whether determinable or speculative.

 **Acco Material Handling Solutions**
Box 792, York, PA 17405
www.accomhs.com



PART OF THE  FKI GROUP OF COMPANIES