



**LOUDEN® SWITCHES**  
**FOR USE WITH 2" FLANGE SUPERTRACK™ MONORAIL SYSTEMS**

702-2  
 Issued 9-7-01

**Cross Switch, Non-electrified**

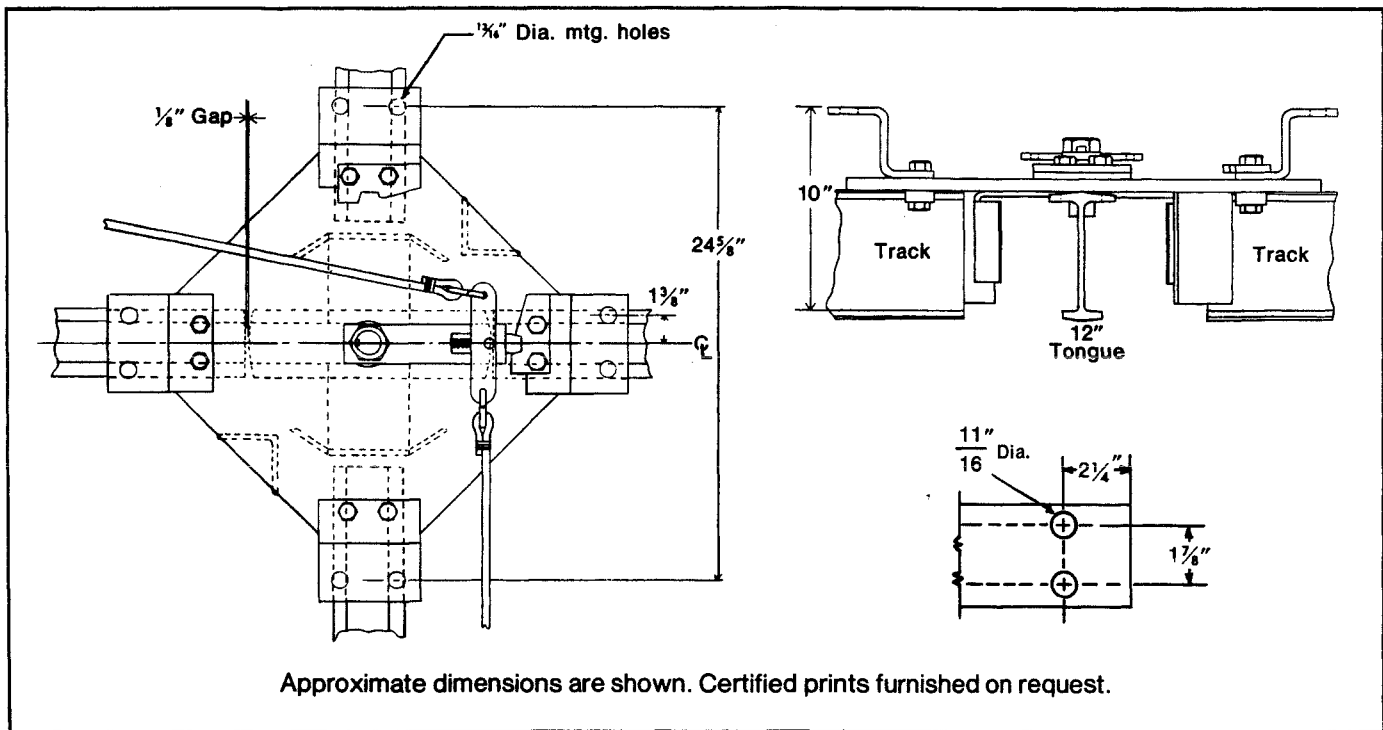
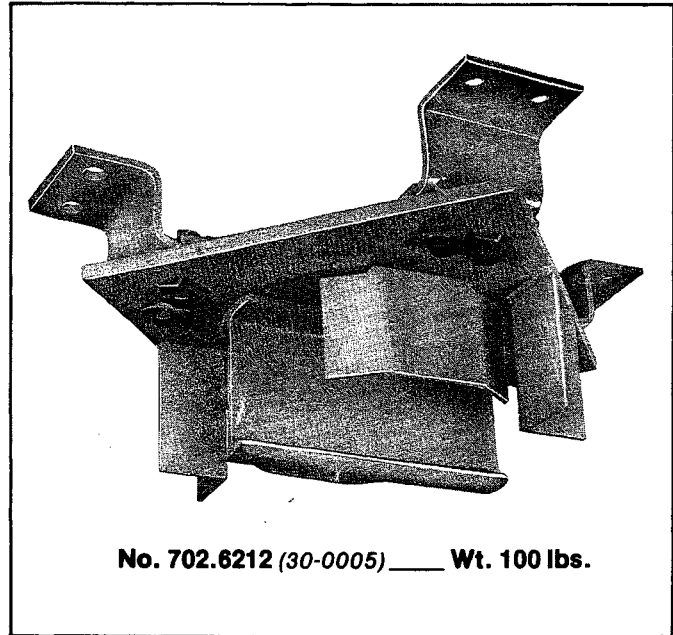
Louden cross-track switches allow two monorail tracks at the same elevation to cross at right angles. The switch is a complete unit constructed of formed steel, with a 12" Louden SuperTrack tongue. For better alignment of the track flanges, all tracks are fastened securely to the switch frame. This also prevents any creeping of the track. Open tracks are guarded by rugged mechanical baffles.

Pulleys are supplied with the switch to be attached to the superstructure at the point most convenient for operation. Fifteen foot pull ropes are supplied as standard for operating the switch.

The switch should be connected directly to the superstructure.

The cross-track switch is not designed to support a load during rotation. Consult the Factory for information on turntables.

**Switch Capacity: 3,000 pounds.**



**WARNING:** Equipment described herein is not designed for and should not be used for lifting, supporting or transporting humans. Use of this equipment for this purpose can result in serious bodily injury and/or property damage. Modifications to upgrade, rerate or otherwise alter the equipment shall be authorized only by the original equipment manufacturer or qualified professional engineer.



**ACCO Material Handling Solutions**  
 76 Acco Drive, Box 792, York, PA 17405-0792  
 717-741-4863, 800-967-7333, FAX 800-715-8897  
 E-mail: info@accomhs.com www.accomhs.com

© 2007 FKI Industries Inc.  
 Printed In USA



**LOUDEN® SWITCHES**  
**FOR USE WITH 3.33" FLANGE SUPERTRACK™ MONORAIL SYSTEMS**

703-2  
Issued 9-7-01

**Cross Switch, Non-electrified**

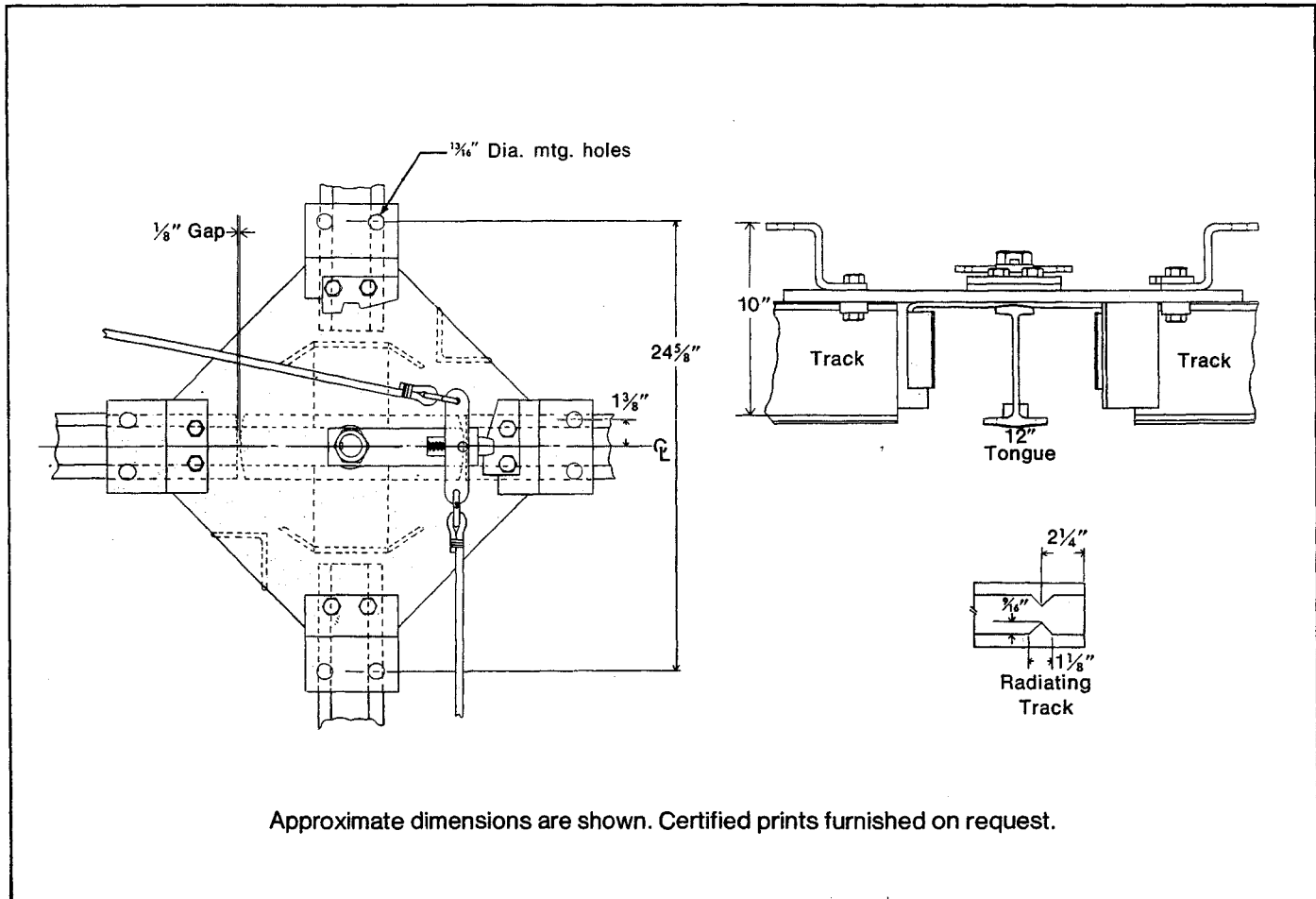
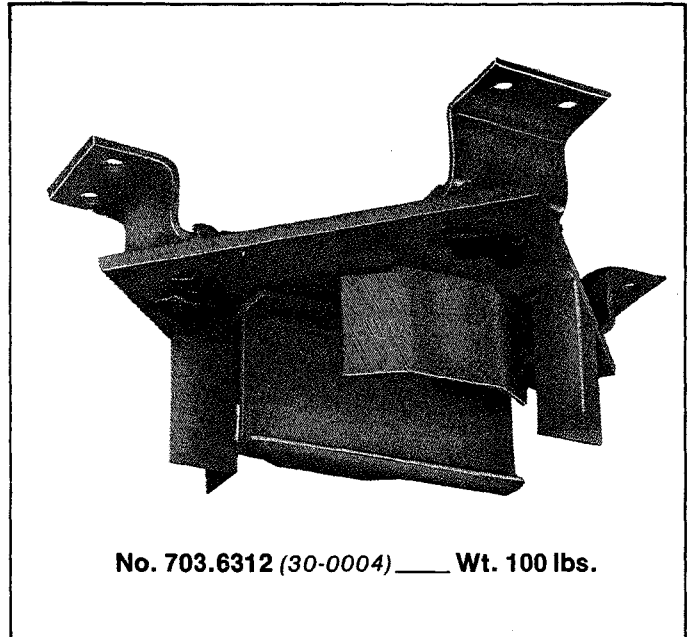
Louden cross-track switches allow two monorail tracks at the same elevation to cross at right angles. The switch is a complete unit constructed of formed steel, with a 12" Louden SuperTrack tongue. For better alignment of the track flanges, all tracks are fastened securely to the switch frame. This also prevents any creeping of the track. Open tracks are guarded by rugged mechanical baffles.

Pulleys are supplied with the switch to be attached to the superstructure at the point most convenient for operation. Fifteen foot pull ropes are supplied as standard for operating the switch.

The switch should be connected directly to the superstructure.

The cross-track switch is not designed to support a load during rotation. Consult the Factory for information on turntables.

**Switch Capacity: 3,000 pounds.**



**ACCO Material Handling Solutions**  
76 Acco Drive, Box 792, York, PA 17405-0792  
717-741-4863, 800-967-7333, FAX 800-715-8897  
E-mail: info@accomhs.com www.accomhs.com

© 2007 FKI Industries Inc.  
Printed In USA