

TYPE 7 CROSSOVER

Type 7 crossovers are satisfactory for Class A, B or C service. They can be used with any of the light rail sections (Nos. 34011 through 34031) and with hand propelled or motor driven carriers having 4 inch or 5 inch diameter wheels. The Type 7 crossover allows two monorail tracks at the same elevation to cross at right angles. It is not designed to operate with a carrier on the rotating track.

Rated loads for Type 7 crossovers are:

- 2,000 pounds per carrier head.
- 4,000 pounds on the rotating frame and at the outlets of the stationary frame.

Type 7 crossovers may be electrified with 2, 3 or 4 power conductors of Insul-8-Bar electrification. Standard conductor spacing as illustrated in the Electrification Section is used for 2-bar and 3-bar crossovers. Special conductor spacing is required for 4-bar crossovers. Elevation of conductors is 6-1/8 inch above track tread. A wiring harness is furnished on electrified crossovers to provide power to the conductors in the crossover. The harness also serves as a jumper to provide power to the conductors on the incoming tracks.

The rotating frame is a welded assembly consisting of structural channels and plates, a center pin and a straight track. The center pin supports the frame from a thrust bearing in the stationary frame. Stops are provided to protect the open ends of the incoming tracks when the crossover is set against the track. A spring loaded latch holds the crossover

track in alignment with the incoming tracks as the carrier moves through the crossover.

The stationary frame is a welded assembly consisting of structural channels and plates. Four rollers in the frame stabilize the rotating frame. Holes are provided in the frame for suspension of the crossover. Slotted holes are provided for attaching the incoming tracks.

Type 7 crossovers are suspended by bolting direct to the superstructure using sixteen 5/8 inch bolts, nuts and lock-washers. Suspension hardware is not included with the crossover and must be ordered separately.

Incoming tracks are bolted to the stationary frame using four 5/8 inch heat treated capscrews, nuts and lockwashers. Slotted holes in the frame help in aligning the system by providing adjustment for the incoming tracks. Hardware is included with the switch and preparations for the incoming tracks

Suspension points for incoming tracks are established so that the load on the stationary frame does not exceed its rated load of 4,000 pounds. Preferably, the first suspension point should be as close as possible to the stationary frame. If incoming tracks are curved, they are supported as recommended in the Track & Fittings Section.

Operating handles on the control chains are located approximately 8 feet below the track. Additional chain can be furnished as required.

Optional accessories for Type 7 crossovers include electric baffles, air or electric operation, signal lights and protective hoods.

TYPE 8 TURNTABLE

Type 8 turntables are identical to Type 7 crossovers except that guards on the stationary frame allow rotation of the unit with a loaded carrier on the track. They can be used with any of the light rail sections (Nos. 34011 through 34031) and with hand propelled or motor driven carriers having 4 inch or 5 inch diameter wheels and a 21 inch or less wheelbase.

Rated loads for Type 8 turntables are the same as the Type 7 crossovers. They may be electrified with 2, 3 or 4 power

conductors of Insul-8-Bar electrification. Suspension of Type 8 turntables and their incoming tracks is the same as used for Type 7 crossovers.

Special turntables can be provided for applications where monorail tracks cross at an angle different than 90 degrees, carriers have a wheelbase greater than 21 inch, or rated loads are greater than 4,000 pounds. Consult factory for information on these applications.

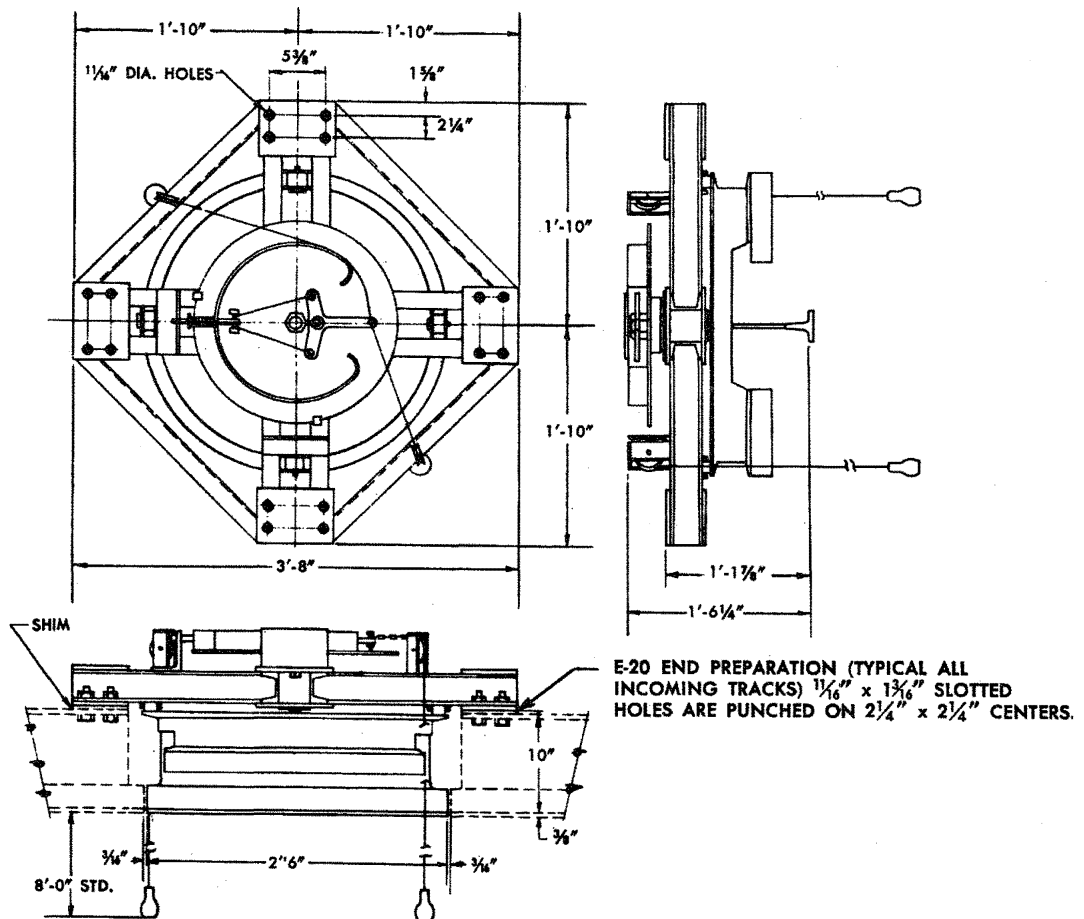
**TYPE 7 CROSSOVER
TYPE 8 TURNTABLE**

OUTLINE DRAWING

The drawing illustrates and provides dimensions for a non-electrified Type 7 crossover. Electrified crossovers have the same dimensions and outline as the non-electrified crossover. Dimensions and outline for Type 8 turntables are

identical to those shown but with the addition of guards to the stationary frame.

The black dots indicate 11/16 inch diameter holes for suspension of the crossover. Sixteen 5/8 inch bolts are required to support the crossover.



Type 7 Crossover		Type 8 Turntable	
Item Number	Type of Electrification	Item Number	Type of Electrification
41050	Non-Electrified	41048	Non-Electrified
41035002	2-Bar Insul-8-Bar	41034802	2-Bar Insul-8-Bar
41035003	3-Bar Insul-8-Bar	41034803	3-Bar Insul-8-Bar