



**LOUDEN® SWITCHES
FOR USE WITH 3.33" FLANGE SUPERTRACK™ PATENTED TRACK
MONORAIL SYSTEMS**

703-10
Issued 9-7-01

**Electrified SuperTrack™ Patented Track
Sliding Switches**

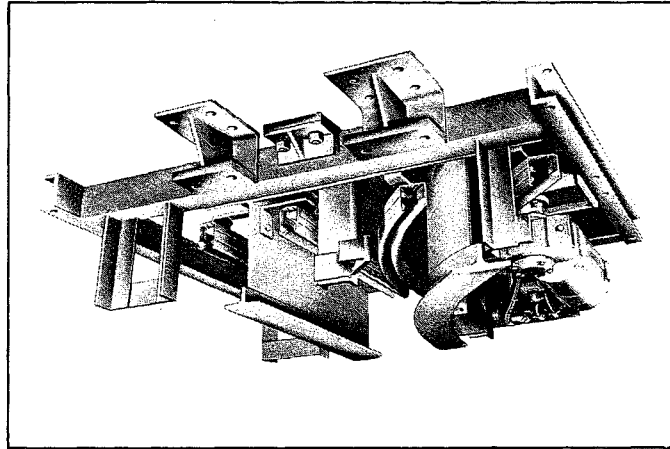
Louden® electrified SuperTrack™ Patented Track sliding switches are available in three configurations to adapt to most monorail layouts, and may be operated manually, by electric motor, or by air cylinders. These switches are available as two-way, three-way and wye. Sliding switches are designed to be used with Louden® motorized carriers equipped with SuperTrack™ Patented Track trolleys.

Two-way switches are used when a branch line monorail line connects with the main line of track at an angle. The switch may be furnished for either right or left hand operation. Wye switches are used where one main line monorail track branches off at angles on both sides of the switch.

Three-way switches are used where there are two spur lines branching off at angles on both sides of the main monorail track.

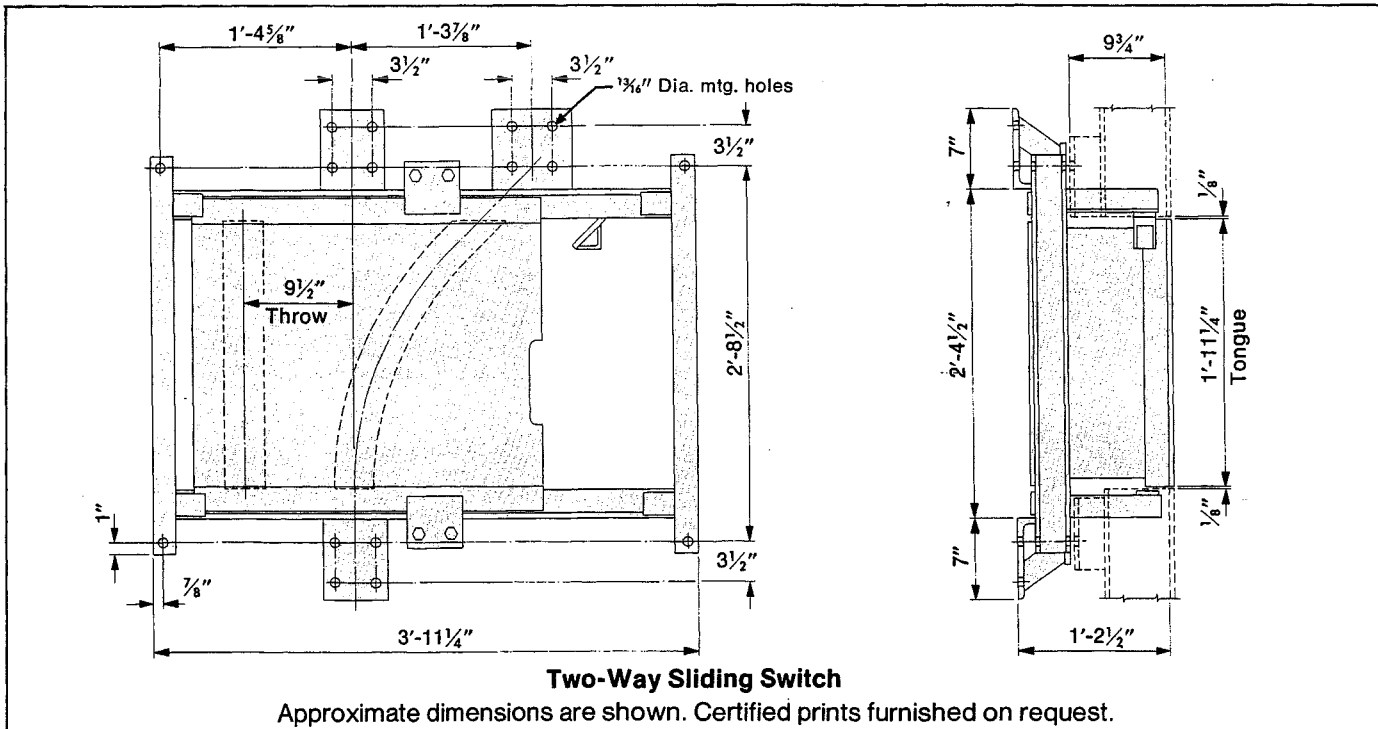
The switch frame is constructed of heavy structural steel members welded together to form a solid, one-piece unit that cannot rack or warp. The carriage is mounted on rollers to provide quick, smooth operation. Positive latches hold the switch carriage securely in place during operation. Accurate alignment of conductors and track is permitted by securely clamping both to the switch frame. Open tracks are guarded by heavy structural steel baffles welded to the switch carriage.

The switch should be connected directly to the superstructure.



Switch Capacity: 10,000 pounds.

Type	Manual	Motor	Air
Right Hand	703.7221R (28-0462) 504 lbs.	703.7225R (30-0699) 590 lbs.	703.7227R (30-0702) 554 lbs.
Left Hand	703.7221L (28-0467) 504 lbs.	703.7225L (30-0700) 590 lbs.	703.7227L (30-0703) 554 lbs.
Wye	703.7222 (28-0468) 616 lbs.	703.7226 (30-0701) 706 lbs.	703.7228 (30-0704) 675 lbs.
Three-Way	703.7223 (30-0698) 825 lbs.		703.7229 (30-0705) 905 lbs.



ACCO Material Handling Solutions
76 Acco Drive, Box 792, York, PA 17405-0792
717-741-4863, 800-967-7333, FAX 800-715-8897
E-mail: info@accomhs.com www.accomhs.com

© 2007 FKI Industries Inc.
Printed In USA



LOUDEN® SWITCHES
FOR USE WITH 3.33" FLANGE TROJANTRACK™ MONORAIL SYSTEMS

703T-13
 Issued 9-7-01

Electrified TrojanTrack Sliding Switches

Louden electrified TrojanTrack sliding switches are available in three configurations to adapt to most monorail layouts, and may be operated manually, by electric motor, or by air cylinders. These switches are available as two-way, wye, and three-way (air operated only). TrojanTrack sliding switches are designed to be used with Louden motorized carriers operating on TrojanTrack monorail systems.

Two-way switches are used when a branch line monorail line connects with the main line of track at an angle. The switch may be furnished for either right or left hand operation.

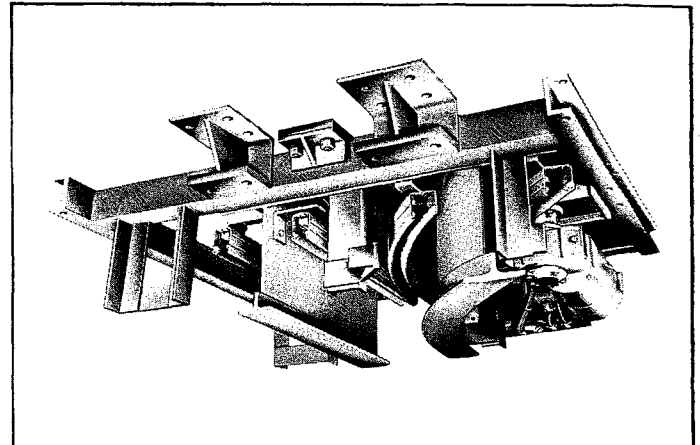
Wye switches are used where one main line monorail track branches off at angles on both sides of the switch.

Three-way switches are used where there are two spur lines branching off at angles on both sides of the main monorail track.

The switch frame is constructed of heavy structural steel members, welded together to form a solid, one-piece unit that cannot rack or warp. The carriage is mounted on rollers to provide quick, smooth operation. Positive latches hold the switch carriage securely in place during operation. Accurate alignment of conductors and track is insured by securely clamping both to the switch frame. Open tracks are guarded by heavy structural steel baffles welded to the switch frame.

The switch should be connected directly to the super-structure.

Switch Capacity: 15,000 pounds.



Type	Manual	Motor	Air
Right Hand	703.7131R (30-0706) 785 lbs.	703.7135R (30-0710) 905 lbs.	703.7137R (30-0713) 855 lbs.
Left Hand	703.7131L (30-0707) 785 lbs.	703.7135L (30-0711) 905 lbs.	703.7137L (30-0714) 855 lbs.
Wye	703.7132 (30-0708) 1050 lbs.	703.7136 (30-0712) 1170 lbs.	703.7138 (30-0715) 1120 lbs.
Three-Way			703.7139 (30-0716) 1385 lbs.

