

The M9C Tractor Drive (Motoveyor) is a rugged heavy-duty monorail drive unit designed to move loads under punishing requirements while providing dependable performance and durability.

SPEEDS:

Standard speeds are 50, 75, 100, 150, 200 and 250 FPM. Single speed control with ACM is standard (in NEMA 3R enclosure). Variable speed (inverter controlled) and two speed units are available.

MOTORS:

Standard motors provided are NEMA C face, TENV, Class F insulation, 30-minute duty and are available for standard commercial power supplies. The motor has a standard NEMA shaft extension. The motors are designed for intermittent reversing crane and trolley drive service. Standard motors are CSA approved.

BRAKE:

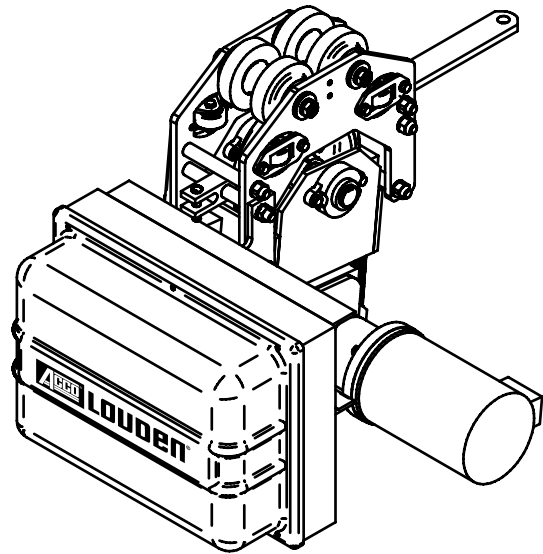
An electric motor brake is optional.

GEARING:

M9C tractor drives are equipped with double reduction helical gear reducers. The gear housing is cast iron. The final reduction to the drive wheel is accomplished thru chain sprockets and a heavy duty roller chain.

CONSTRUCTION:

Both the upper and lower frames of the M9C are of heavy fabricated steel. The upper frame includes hardened steel wheels and side guide rollers. The lower frame, for mounting the drive wheel and motor, is connected to the top frame in a manner that allows quick and easy adjustment of the drive wheel pressure against the underside of the track. The tractor drive is spring loaded to absorb shock loads and to maintain constant pressure on the drive tire.



DRIVE WHEEL:

The 9" diameter under-rail drive wheel gives positive action, no-slip traction, regardless of the load. The polyurethane tire is molded and bonded to a cast iron wheel, and is supported by ball bearings.

TROLLEY WHEELS:

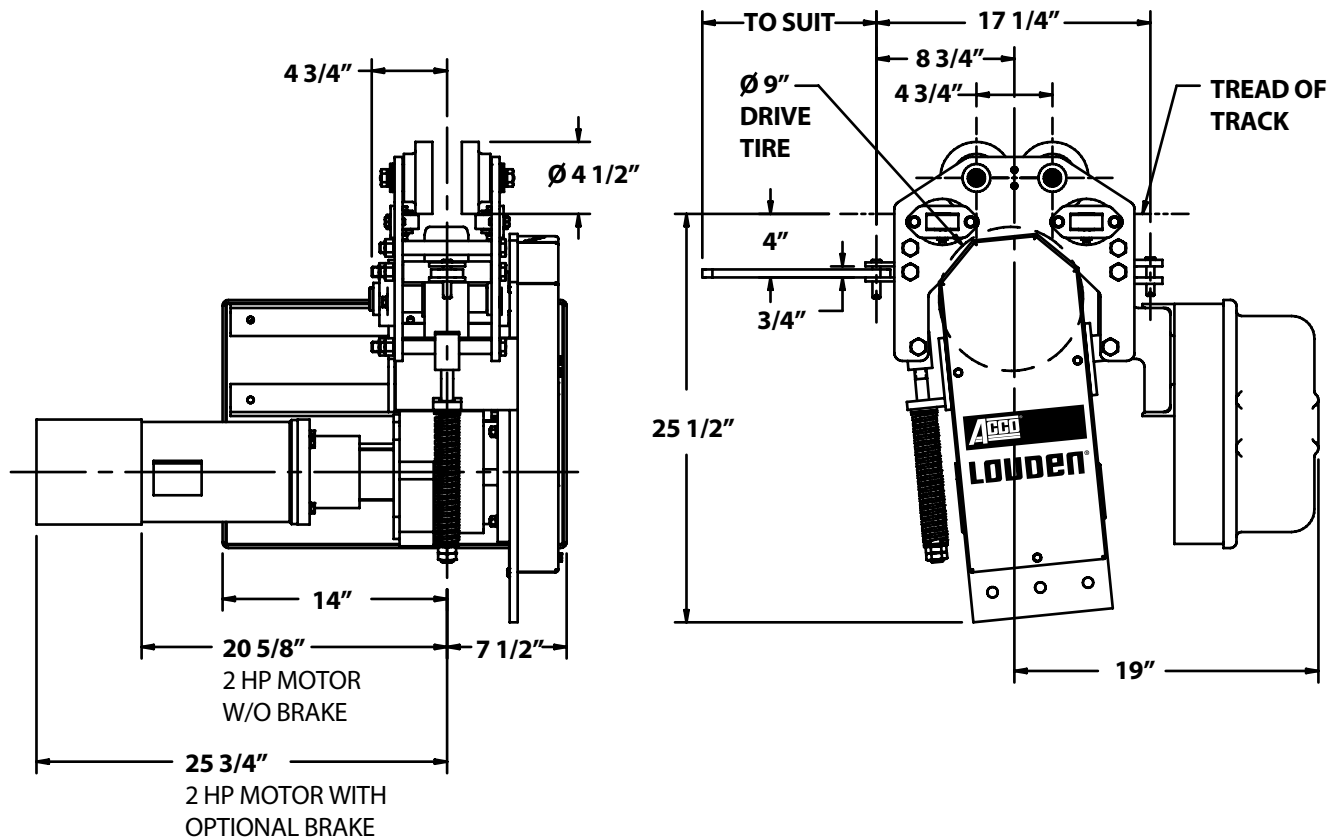
The M9C tractor drive is equipped with 4-1/2" diameter flangeless steel wheels with hardened tread. Guide rollers are hardened and have an extra heavy outer ring. The wheel axle is equipped with grease fitting for refreshing lubricant under abnormal conditions.

BEARINGS:

Each wheel includes a heavy-duty double row, pre-lubricated tapered roller bearing.

OPERATION:

The M9C tractor drive is designed to operate on 3.25" or 3.33" flange Louden and Trambeam track. Unit will negotiate electrified SuperTrack and TrojanTrack switches as well as curves with a 29" or larger radius. The tractor drive will also navigate through 505.7824, 505.7825, 505.7830, and 505.7831 latches and latch blocks. Contact the factory to discuss applications not listed.



Note: The M9C is also available with the motor turned parallel to the direction of travel for applications where side clearance is limited. Contact the factory to discuss this application.

NOMINAL SPEED (FPM)	MAXIMUM TOW LOADS (LBS)			
	3/4 HP	1 HP	1 1/2 HP	2 HP
50	26,200	35,000	40,000	-
75	17,500	23,300	35,000	40,000
100	13,100	17,500	26,200	35,000
150	8,700	11,700	17,500	23,300
200	-	6,400	9,700	12,900
250	-	-	7,700	10,300

AVAILABLE OPTIONS:

Options available for this tractor drive include construction for hazardous locations, bronze trolley wheels, motor brake, motor brake with manual release, quick tire release, control pendant, special motor & control options, air motor and epoxy paint.