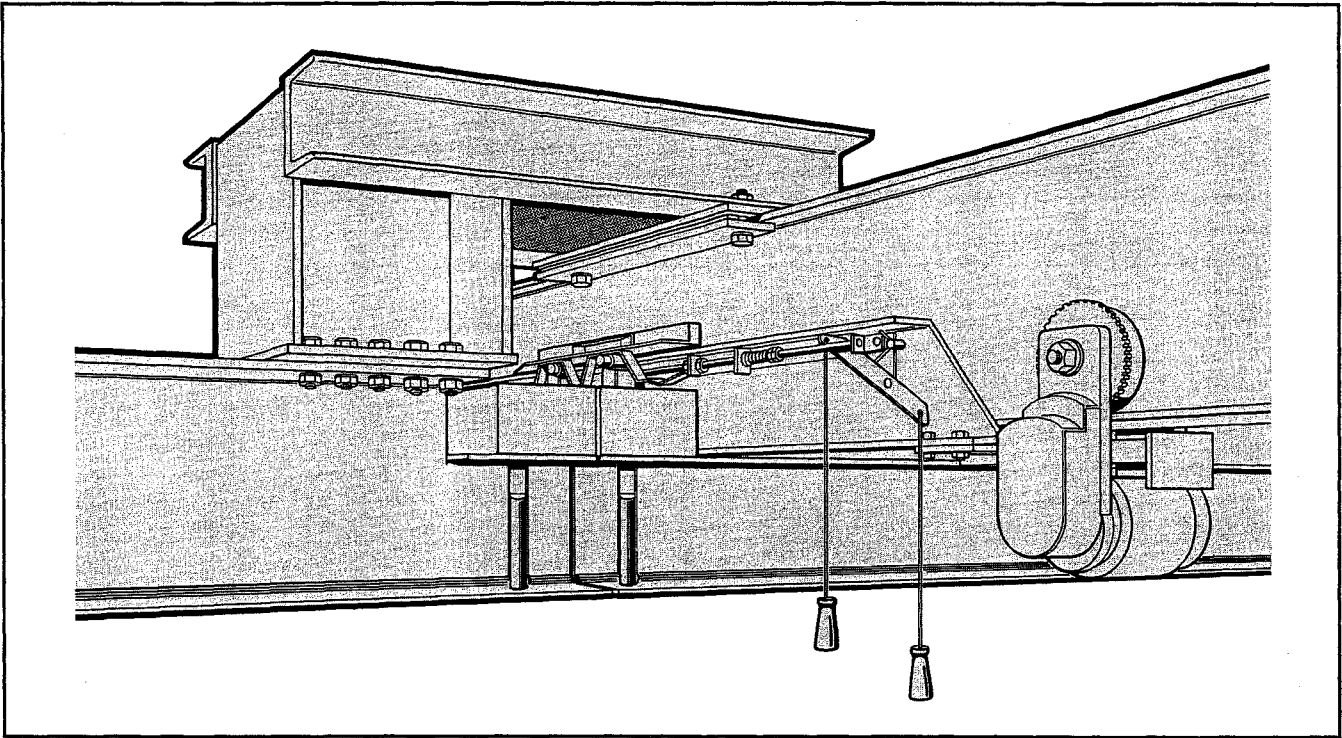


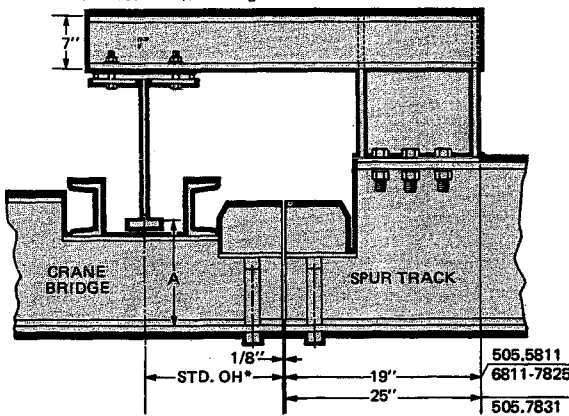


TRACK SUPPORTS

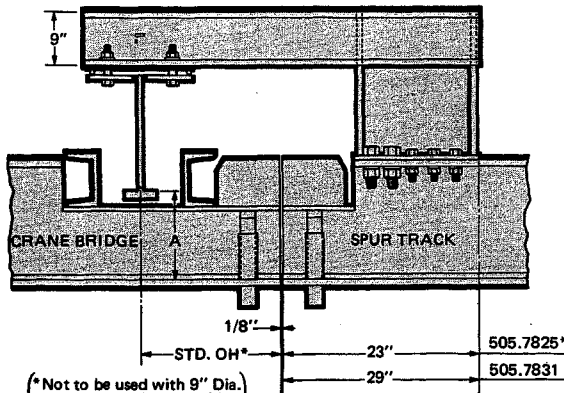


DATA:

Spur Track Supports using No. 505.5811 (2" Flg) -
No. 505.6811 (3.33" Flg) and No. 505.7825 Latch Blocks.

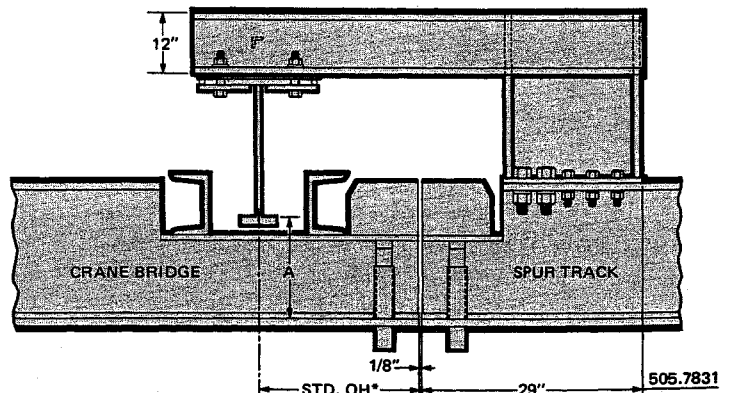


NO. 504.3



(* Not to be used with 9" Dia. Wheels Running on Bridge.)

NO. 504.12



NO. 504.15

**504.3 TO AND INCLUDING 3 TON
504.12 TO AND INCLUDING 5 TON
504.15 TO AND INCLUDING 7½ TON**

A spur track support is used to provide smooth passage of trolley wheels over the transfer joint from crane to monorail. They are constructed of heavy structural steel members welded together in accordance with the best shop practice by certified welders. Since the end of the spur track is supported on the crane runway, any deflections at the ends of the crane bridge and spur track are equalized. No other support of the spur track should be provided close to the spur track support since such a support would upset its equalizing effect. Where the layout calls for the spur track to curve immediately adjacent to the crane runway, a spur track support is not feasible; but the superstructure supporting the curve should be arranged so that it bears on the runway and gives the same equalizing effect as the spur track support.



GUIDE TO TREAD TO TREAD DIMENSIONS AND OVERHANGS ON CRANES WITH LATCHES OR LATCH BLOCKS

LATCH NO.	CRANE SERIES	NUMBER OF WHEELS ON TRUCK	TREAD/TREAD "A"	MINIMUM OVERHANG W/LATCH	MINIMUM OVERHANG W/LATCH LATCH BLOCK	MAXIMUM OVERHANG W/LATCH OR LATCH BLOCK
5810/6810	551 Non-Electrified	4	10"	12"	12"	18"
7824	551 Electrified 604.922 BRI	4	1'-1¼"	12"	12"	18"
7824	551-E 603.6 Bri 603.7 Bri	4	1'-0½"	12"	12"	18"
7824	552 Electrified	4	See Note #2	15"	15"	18"
7824	552 Electrified	8	See Note #2	17"	17"	18"
7824	503	4 8	See Note #2	15" 17"	15" 17"	18"
7824	503-T 5 Ton Cap. Only	8	See Note #2	18"	18"	18"
7824	517	8 16	See Note #2	15" 17"	15" 17"	18"
7824	517-T 5 Ton Cap. Only	8 16	See Note #2	18"	18"	18"
7824	585	4 8	See Note #2	14" 16½"	14" 16½"	18"
7824	586	8 16	See Note #2	14" 16½"	14" 16½"	18"
7830	503-T 517-T	8 16	See Note #3	16"	16"	18"

NOTES:

1. **Standard overhang** at latch end of crane is 18" for all models of cranes and latches.
2. The following are the tread to tread dimensions for the designated bridge girder depths. (505.7824/7825 manual latches)

604.9	11"
604.12	14"
605.12	14"
604.14	16"
15" Depth Bridge	17"

 Girders and Greater
3. Tread to tread dimension for cranes with #505.7830 motor operated latches -*SuperTrack* Girder or *TrojanTrack* bridges.

4½" diameter wheels running on bridge	14"
<i>TrojanTrack</i> with 9" diameter wheels running on bridge	17"
4. Applications requiring overhangs in excess of 18"; consult estimating.

