

**LOUDEN**®  
**TROLLEYS**  
**FOR USE WITH 3.33" FLANGE**  
**SUPERTRACK™ SYSTEMS**

**FEATURES AND BENEFITS**

**FEATURES**

Trolley yokes are one (1) piece cold formed steel.

Precision ball or tapered roller bearings mating wheel with high strength axle.

Utilizes flat tread wheels turned from forged steel blanks with induction hardened tread and flanges. Has a minimum hardness of 425 Brinnell.

Bolt through the side of the yoke.

All trolleys are fully articulating.

Standard engineered loadbar, with properly spaced trolleys.

Bronze wheels available on some units.

Trolleys equipped with external grease fittings.

Flangeless wheels with guide rollers available.

Standard engineered load fittings available.

**BENEFITS**

Structural and dimensional integrity, resulting in a consistently high quality component.

Easy horizontal movement of trolley along track, adds longevity to components.

Long wearing tread and flange for exceptionally long service life, with minimum rolling friction.

Contains loadbar in trolley, and is easily removed thereby simplifying erection of the system.

Equalizes load to both sides of rail, minimizing unit stresses, resulting in longer life of track. Definite plus over "Kingpin" type. Additionally, trolleys guide smoothly around curves and through switches and latches in monorail systems.

Equalizes wheel load along track for reduced unit stresses (as above), plus protecting trolleys from damage with rugged bumpers.

For applications where atmospheres dictate the use of spark-resistant components.

Enables refreshing lubricant to be added as required on systems with severe duty cycle.

Reduces track wear on systems with severe duty cycle or a large number of curves and switches.

Swiveling clevis, hooks, or eyes may be specified for attaching a wide variety of loads to the trolley.

**LOUDEN**®

TROLLEYS

FOR USE WITH 3.33" FLANGE  
SUPERTRACK™ SYSTEMS

**375 lb. Capacity Two-Wheel Trolley  
with 28-0875 Wheel Assembly**

Two-wheel trolleys are for use with special loadbars, racks and carriers. When used as independent load bearing units, two-wheel trolleys do not provide the ease and smoothness of travel accomplished by their use in pairs, one at each end of the carrier.

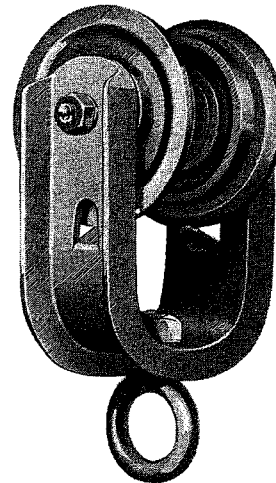
Yokes for this trolley assembly are formed from channel steel. Forged eye fittings are available.

For wheel assembly, refer to page 400-4.

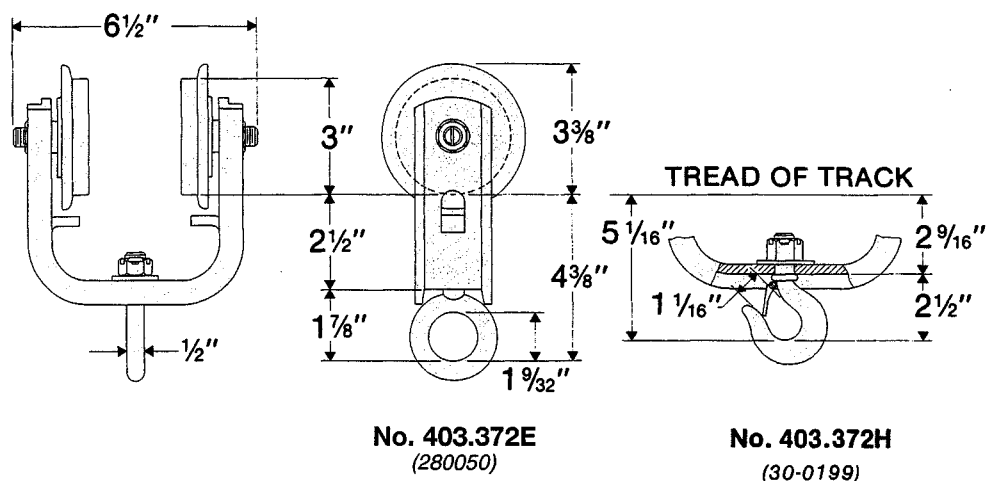
Spark-resistant bronze wheels not available.

For use in tongue switches No. 703.6330, No. 703.6333 and No. 703.6332 **only**.

Not for use with *TrojanTrack* girder.



**No. 403.372E** (28-0050)  
with No. 403.E6 Eye \_\_\_\_ Wt. 5½ lbs.  
**No. 403.372H** (30-0199)  
with 403.H3 Hook—Wt. 5½ lbs.  
**No. 403.372LF** (28-0051)  
(less Fitting) \_\_\_\_ Wt. 5 lbs.



Approximate dimensions are shown. Certified prints furnished on request.



**LOUDEN® TROLLEYS**  
**FOR USE WITH 3.33" FLANGE SUPERTRACK™ SYSTEMS**

403-2  
Issued 9-7-01

**750 lb. Capacity Four-Wheel Trolley  
with 28-0875 Wheel Assembly**

Yokes for this assembly are formed from channel steel. Loadbars are cast malleable iron. Fittings available are forged eye or hook.

For wheel assembly, refer to page 400-4.

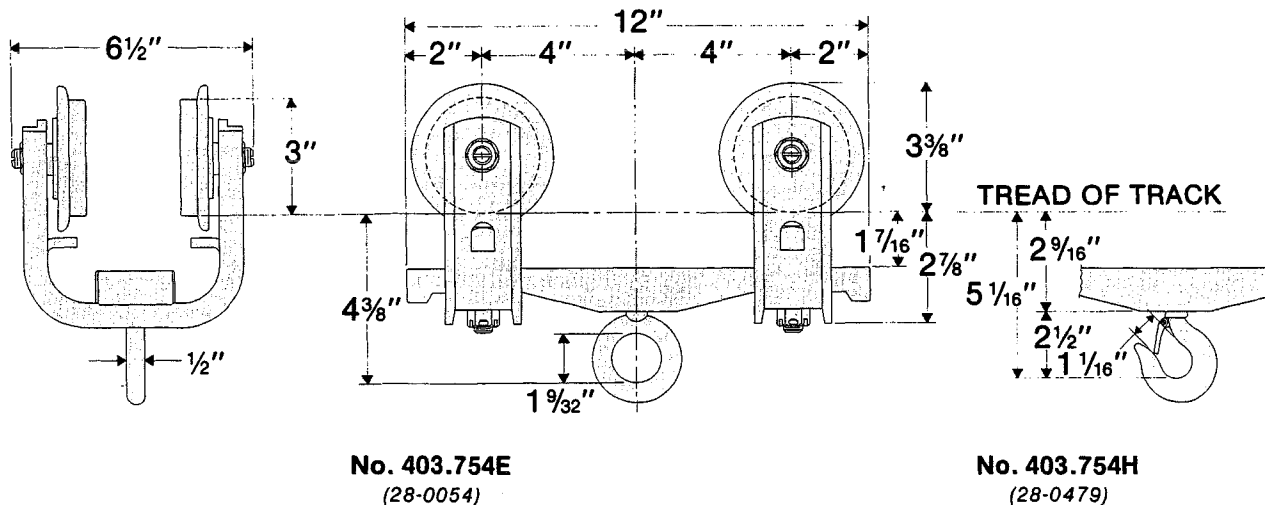
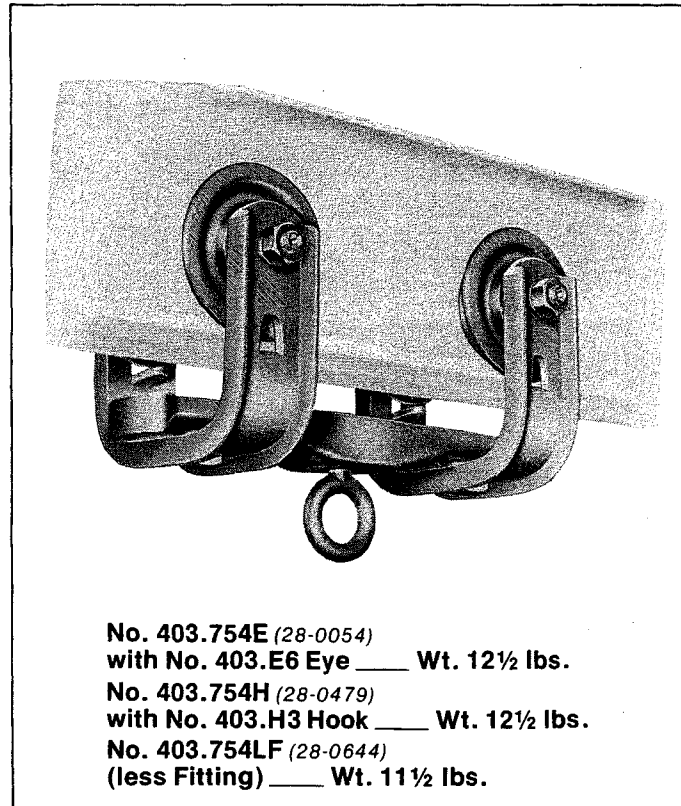
Spark-resistant bronze wheels not available.

For use in tongue switches No. 703.6330, No. 703.6333 and No. 703.6332 **only**.

Will not work on close approach end stops.

Not for use with *TrojanTrack* girder.

**WARNING:** Equipment described herein is not designed for and should not be used for lifting, supporting or transporting humans. Use of the equipment for this purpose can result in serious bodily injury and/or property damage.



**Acco Material Handling Solutions**  
76 Acco Drive, Box 792, York, PA 17405-0792  
717-741-4863, 800-967-7333, FAX 800-715-8897  
E-mail: info@accomhs.com www.accomhs.com

© 2007 FKI Industries Inc.  
Printed In USA



**LOUDEN® TROLLEYS**  
**FOR USE WITH 3.33" FLANGE SUPERTRACK™ SYSTEMS**

403-3  
Issued 9-7-01

**1500 lb. Capacity Two-Wheel Trolley with  
28-0878 Wheel Assembly**

Two-wheel trolleys are for use with special loadbars, racks, and carriers. When used as independent load bearing units, two-wheel trolleys do not provide the ease and smoothness of travel accomplished by their use in pairs, one at each end of the carrier.

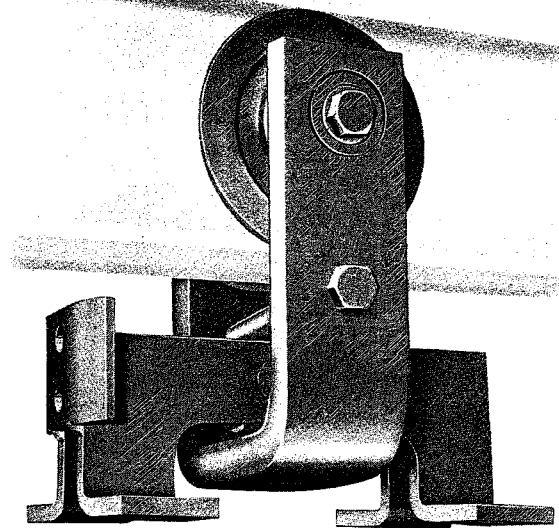
Yokes and fittings for this assembly are made of formed steel. Flush-rack and clevis-rack fittings are available.

For wheel assembly, refer to page 400-5.

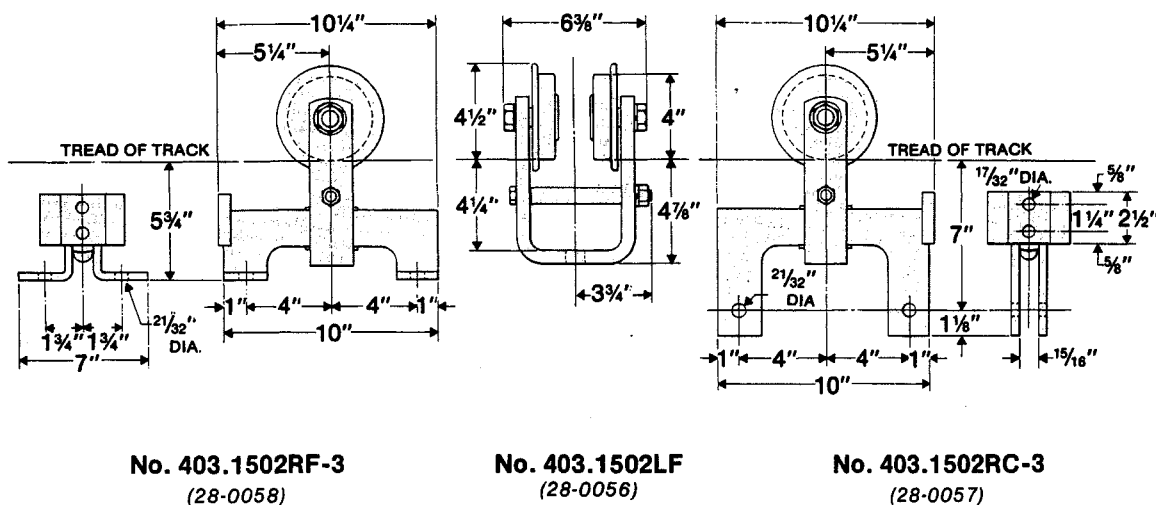
Options: (a) spark-resistant bronze wheels  
(b) flangeless wheels; refer to trolley on page 403-12.

When used with 703.72XX track switches, additional lugs are required on the trolley yoke to contact switch baffles. Consult Factory.

**WARNING:** Equipment described herein is not designed for and should not be used for lifting, supporting or transporting humans. Use of the equipment for this purpose can result in serious bodily injury and/or property damage.



**No. 403.1502RF-3 (28-0058)**  
**with No. 403.RF-3 Flush Rack Fitting \_\_\_\_ Wt. 21 lbs.**  
**No. 403.1502LF (28-0056)**  
**(Less Fitting) \_\_\_\_ Wt. 18 lbs.**  
**No. 403.1502RC-3 (28-0057)**  
**with No. 403.RC-3 Clevis Rack Fitting \_\_\_\_ Wt. 21 lbs.**



Approximate dimensions are shown. Certified prints furnished on request.



**LOUDEN® TROLLEYS**  
**FOR USE WITH 3.33" FLANGE SUPERTRACK™ SYSTEMS**

403-4  
Issued 9-7-01

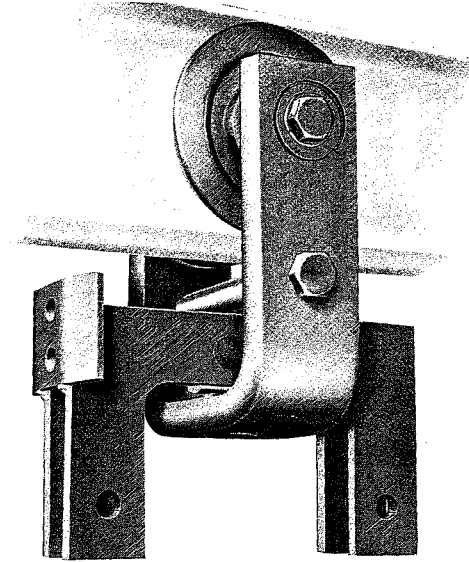
**2500 lb. Capacity Two-Wheel Trolley**  
**with 28-0882 Wheel Assembly**

Two-wheel trolleys are for use with special loadbars, racks and carriers. When used as independent load bearing units, two-wheel trolleys do not provide the ease and smoothness of travel accomplished by their use in pairs, one at each end of the carrier.

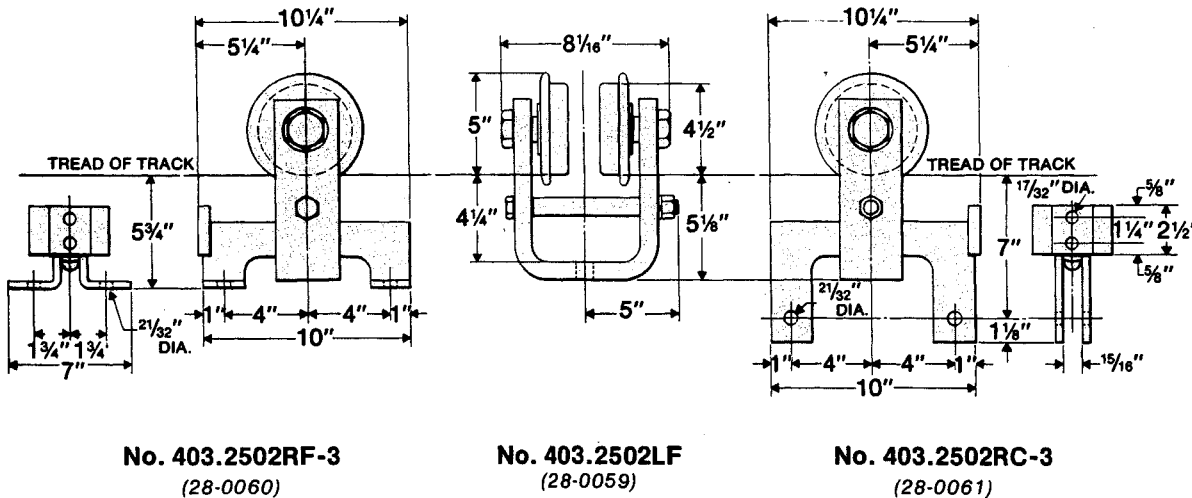
Yokes and fittings for this assembly are made of formed steel. Flush-rack and clevis-rack fittings are available.

For wheel assembly, refer to page 400-7.

Options: (a) spark-resistant bronze wheels  
(b) flangeless wheels; refer to trolley on page 403-13.



**No. 403.2502RC-3** (28-0061)  
with **No. 403.RC-3** Clevis Rack Fitting \_\_\_\_ Wt. 37 lbs.  
**No. 403.2502LF** (28-0059)  
(Less Fitting) \_\_\_\_ Wt. 35 lbs.  
**No. 403.2502RF-3** (28-0060)  
with **No. 403.RF-3** Flush Rack Fitting \_\_\_\_ Wt. 37 lbs.



Approximate dimensions are shown. Certified prints furnished on request.



**Acco Material Handling Solutions**  
76 Acco Drive, Box 792, York, PA 17405-0792  
717-741-4863, 800-967-7333, FAX 800-715-8897  
E-mail: info@accomhs.com www.accomhs.com

© 2007 FKI Industries Inc.  
Printed In USA



**LOUDEN® TROLLEYS  
FOR USE WITH 3.33" FLANGE SUPERTRACK™ SYSTEMS**

403-5  
Issued 9-7-01

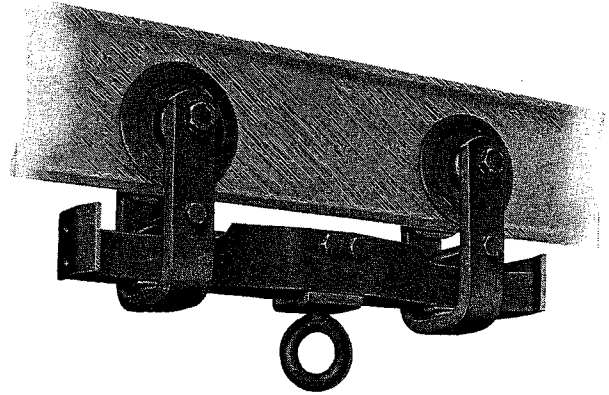
**3000 lb. Capacity Four-Wheel Trolley  
with 28-0878 Wheel Assembly**

Yokes and loadbars for this assembly are made of formed steel. Fittings available are forged eye, hook, fabricated steel clevis, or two-piece malleable iron swivel clevis.

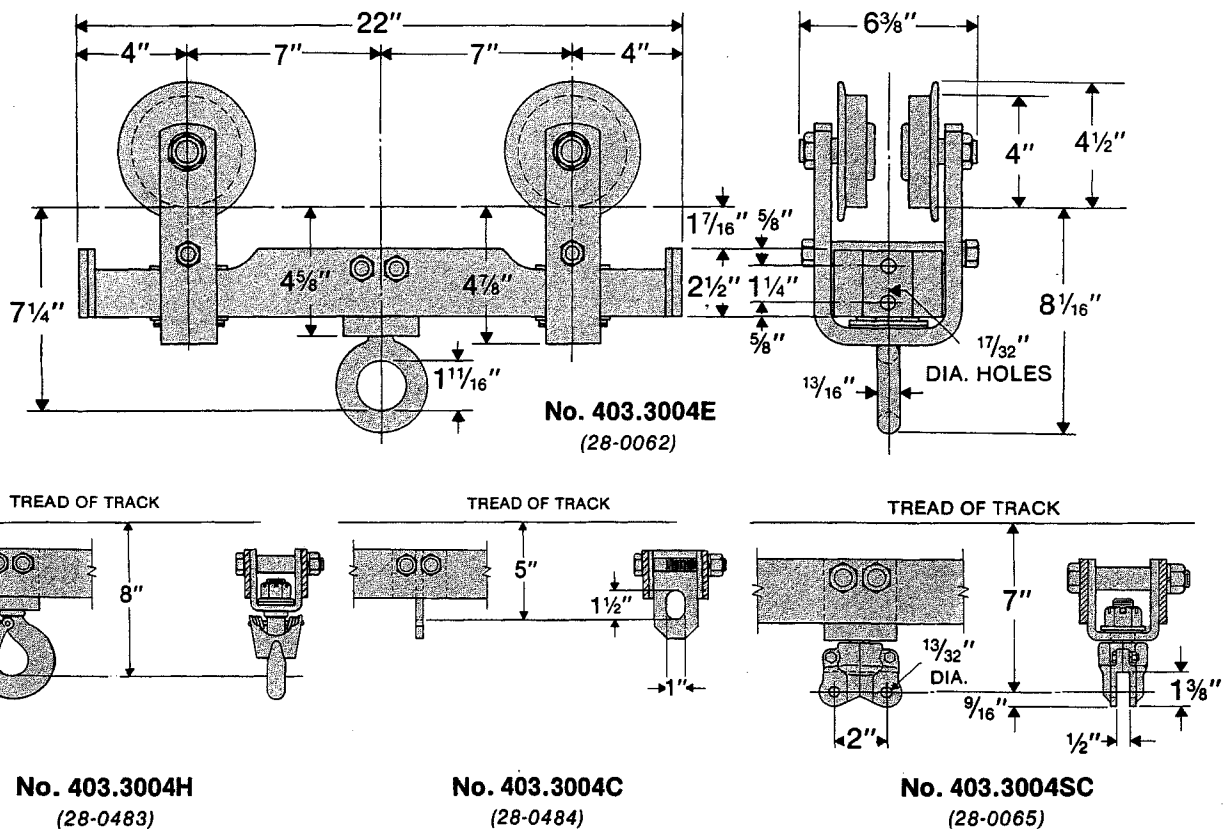
For wheel assembly, refer to page 400-5.

Options: (a) spark-resistant bronze wheels  
(b) flangeless wheels; refer to trolley on page 403-12.

When used with 703.72XX track switches, additional lugs are required on the trolley yoke to contact switch baffles. Consult Factory.



**No. 403.3004E** (28-0062)  
with No. 403.E9 Eye \_\_\_\_ Wt. 40 lbs.  
**No. 403.3004H** (28-0483)  
with No. 403.H6 Hook \_\_\_\_ Wt. 41 lbs.  
**No. 403.3004C** (28-0484)  
with No. 403.C3 Clevis \_\_\_\_ Wt. 38 lbs.  
**No. 403.3004SC** (28-0065)  
with No. 403.SC3 Swivel Clevis \_\_\_\_ Wt. 42 lbs.  
**No. 403.3004WCS** (28-0482)  
with Center Spacer \_\_\_\_ Wt. 38 lbs.



Approximate dimensions are shown. Certified prints furnished on request.



**LOUDEN® TROLLEYS**  
**FOR USE WITH 3.33" FLANGE SUPERTRACK™ SYSTEMS**

403-6  
 Issued 9-7-01

**3000 lb. Capacity Four-Wheel Trolley  
 with 28-0878 Wheel Assembly**

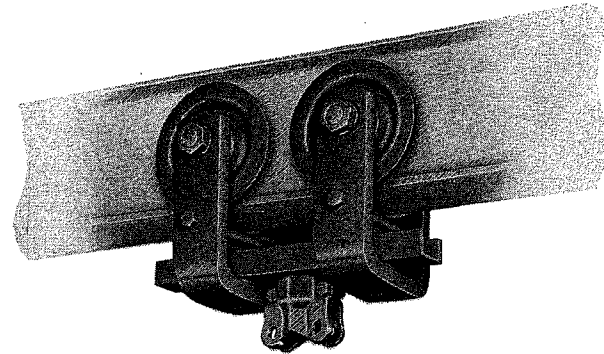
Yokes and loadbars for this trolley are made from formed steel. Fittings available are forged eye, hook, or two-piece malleable iron swivel clevis.

Yokes with guide rollers cannot be used on this trolley.

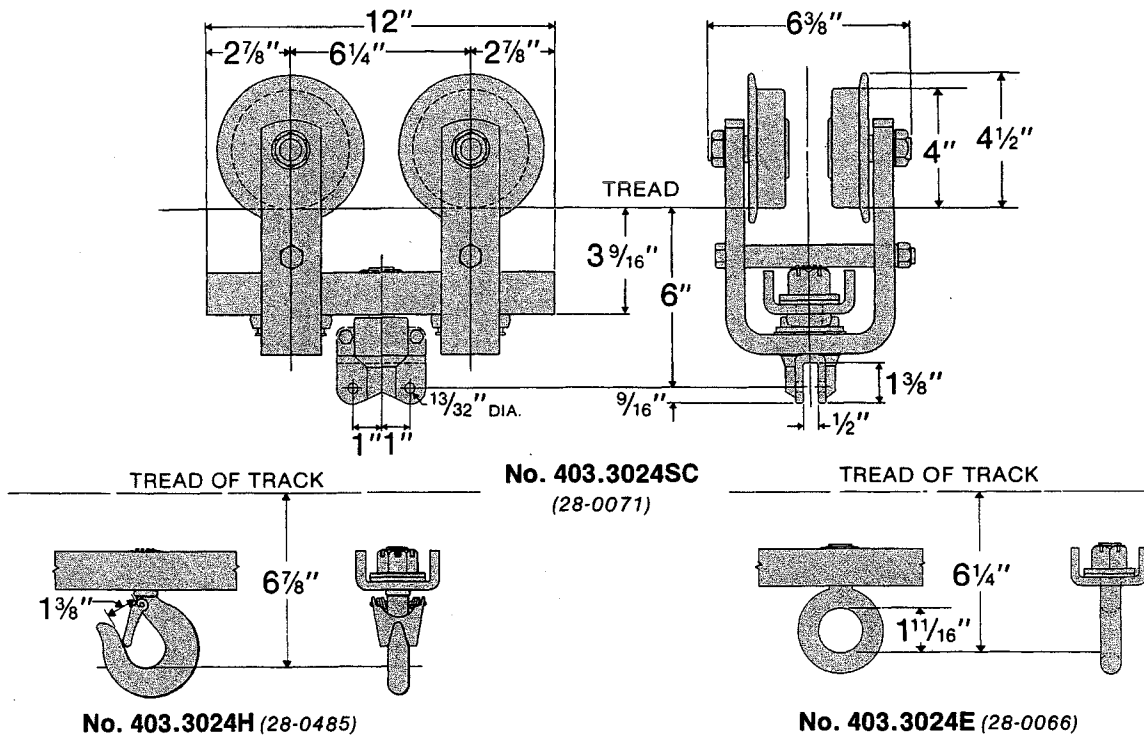
For wheel assembly, refer to page 400-5.

Options: (a) spark-resistant bronze wheels.

When used with 703.72XX track switches, additional lugs are required on the trolley yoke to contact switch baffles. Consult Factory.



**No. 403.3024SC** (28-0071)  
 with **No. 403.SC3 Swivel Clevis** \_\_\_\_ Wt. 36 lbs.  
**No. 403.3024E** (28-0066)  
 with **No. 403.E9 Eye** \_\_\_\_ Wt. 36 lbs.  
**No. 403.3024H** (28-0485)  
 with **No. 403.H6 Hook** \_\_\_\_ Wt. 36 lbs.  
**No. 403.3024LF** (28-0486)  
 (less Fitting) \_\_\_\_ Wt. 34 lbs.



Approximate dimensions are shown. Certified prints furnished on request.



**ACCO Material Handling Solutions**  
 76 Acco Drive, Box 792, York, PA 17405-0792  
 717-741-4863, 800-967-7333, FAX 800-715-8897  
 E-mail: info@accomhs.com www.accomhs.com

© 2007 FKI Industries Inc.  
 Printed In USA



**LOUDEN® TROLLEYS**  
**FOR USE WITH 3.33" FLANGE SUPERTRACK™ SYSTEMS**

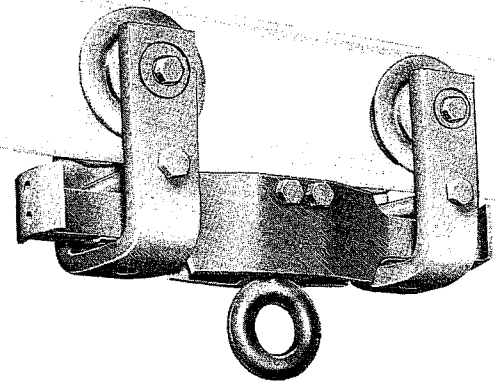
403-7  
Issued 9-7-01

**5000 lb. Capacity Four-Wheel Trolley  
with 28-0882 Wheel Assembly**

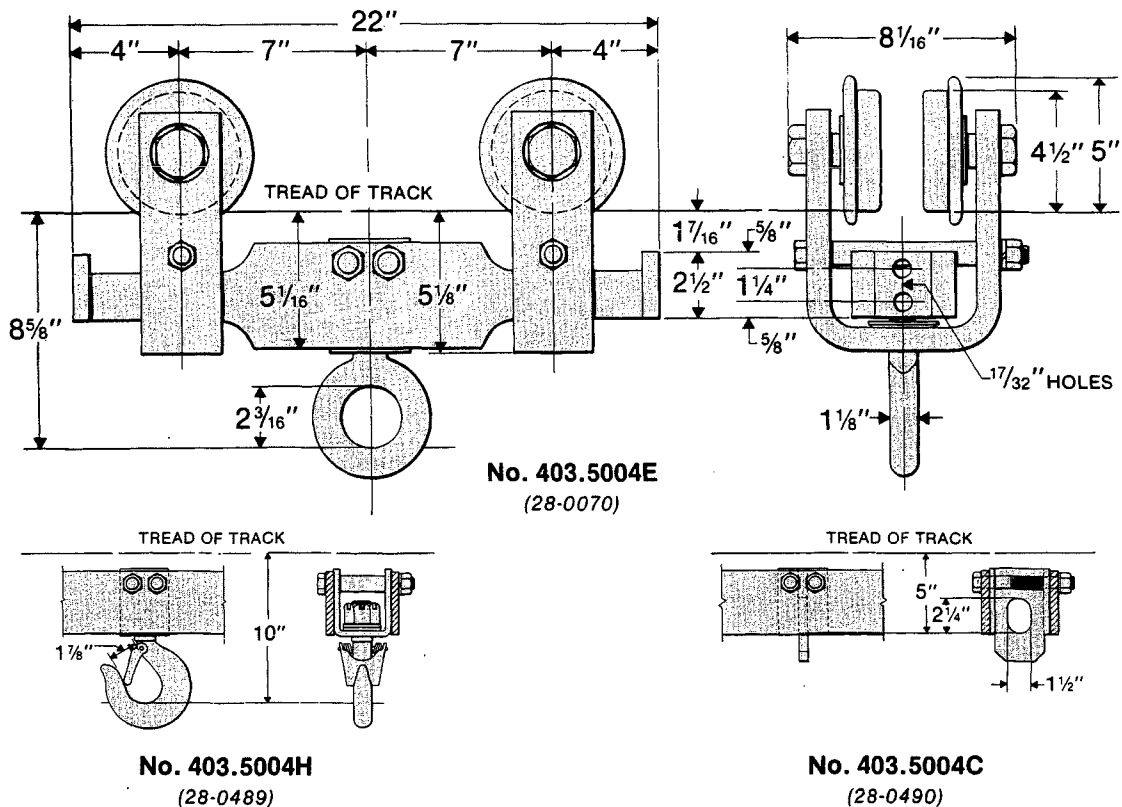
Yokes and loadbar for this trolley are made from formed steel. Fittings available are forged eye, hook or fabricated steel clevis.

For wheel assembly, refer to page 400-7.

Options: (a) spark-resistant bronze wheels  
(b) flangeless wheels; refer to trolley on page 403-13.



**No. 403.5004E** (28-0070)  
with No. 403.E12 Eye \_\_\_\_ Wt. 79 lbs.  
**No. 403.5004H** (28-0489)  
with No. 403.H9 Hook \_\_\_\_ Wt. 81 lbs.  
**No. 403.5004C** (28-0490)  
with No. 403.C6 Clevis \_\_\_\_ Wt. 75 lbs.  
**No. 403.5004WCS** (28-0488)  
with Center Spacer \_\_\_\_ Wt. 74 lbs.







**LOUDEN® TROLLEYS**  
**FOR USE WITH 3.33" FLANGE SUPERTRACK™ SYSTEMS**

403-8  
 Issued 9-7-01

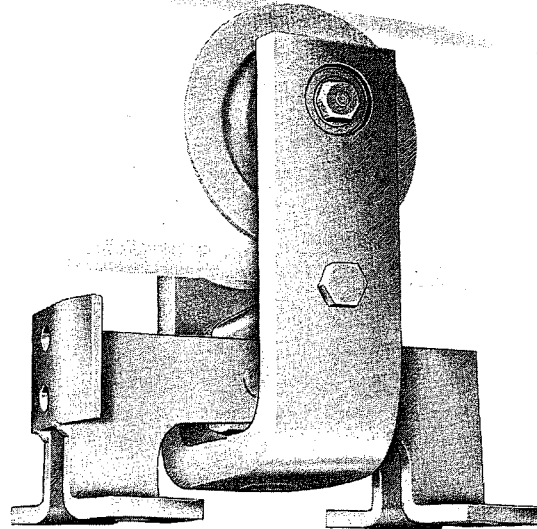
**5000 lb. Capacity Two-Wheel Trolley  
 with 28-0593 (PF-4370) Wheel Assembly**

Two-wheel trolleys are for use with special loadbars, racks and carriers. When used as independent load bearing units, two-wheel trolleys do not provide the ease and smoothness of travel accomplished by their use in pairs, one at each end of the carrier.

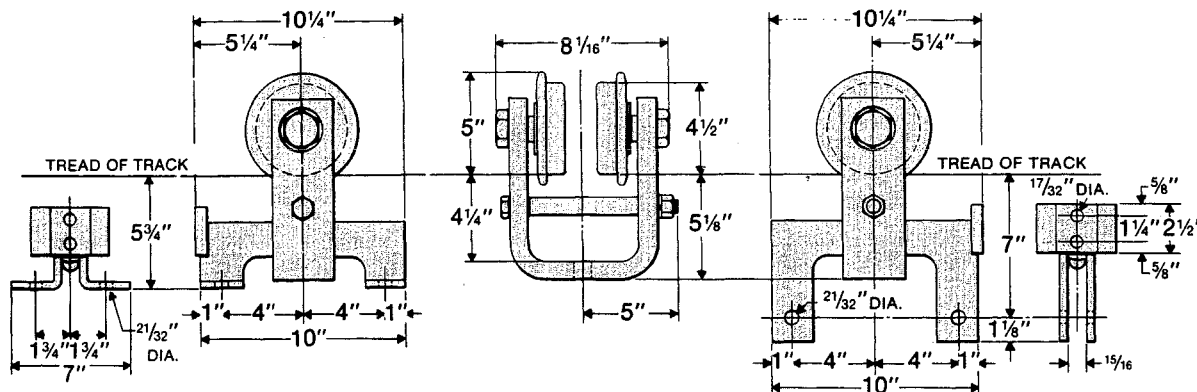
Yokes and fittings are made from formed steel. Flush-rack and clevis-rack fittings are available.

For wheel assembly, refer to page 400-9.

- Options: (a) spark-resistant bronze wheels.  
 (b) flangeless wheels; refer to trolley on page 403-14.



**No. 403.5002RF-5 (28-0068)**  
**with No. 403.RF-5 Flush Rack Fitting \_\_\_\_ Wt. 37 lbs.**  
**No. 403.5002LF (28-0067)**  
**(Less Fitting) \_\_\_\_ Wt. 35 lbs.**  
**No. 403.5002RC-5 (28-0069)**  
**with No. 403.RC-5 Clevis Rack Fitting \_\_\_\_ Wt. 37 lbs.**



**No. 403.5002RF-5**  
 (28-0068)

**No. 403.5002LF**  
 (28-0067)

**No. 403.5002RC-5**  
 (28-0069)

Approximate dimensions are shown. Certified prints furnished on request.



**Acco Material Handling Solutions**  
 76 Acco Drive, Box 792, York, PA 17405-0792  
 717-741-4863, 800-967-7333, FAX 800-715-8897  
 E-mail: info@accomhs.com www.accomhs.com

© 2007 FKI Industries Inc.  
 Printed In USA



**LOUDEN® TROLLEYS**  
**FOR USE WITH 3.33" FLANGE SUPERTRACK™ SYSTEMS**

403-9  
Issued 9-7-01

**6000 lb. Capacity Eight-Wheel Trolley  
with 28-0878 Wheel Assembly**

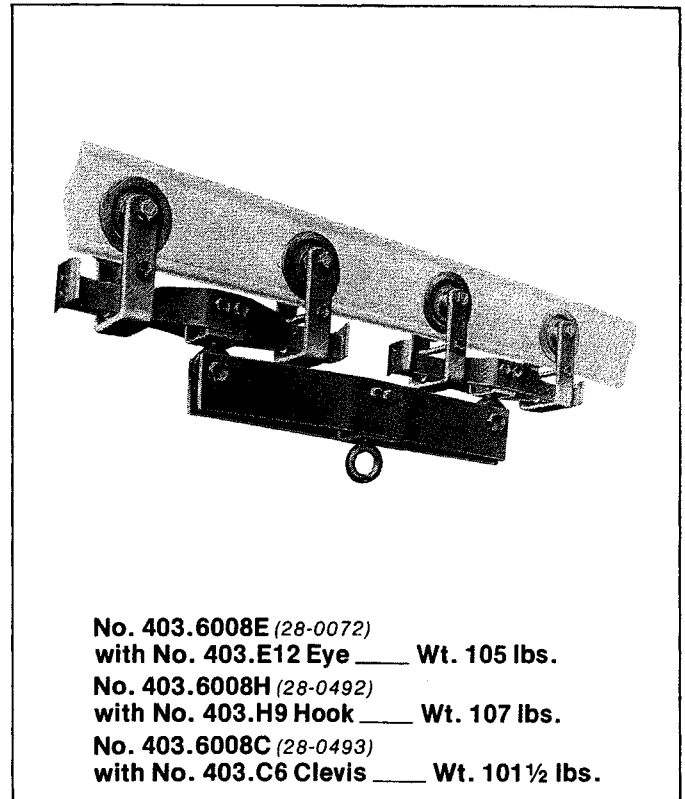
Yokes, loadbar and connecting bar for this assembly are made from formed steel. Fittings available are drop forged eye, hook or fabricated steel clevis.

For wheel assembly, refer to page 400-5.

Options: (a) spark-resistant bronze wheels  
(b) flangeless wheels; refer to trolley on page 403-12.

When used with 703.72XX track switches, additional lugs are required on the trolley yoke to contact switch baffles. Consult Factory.

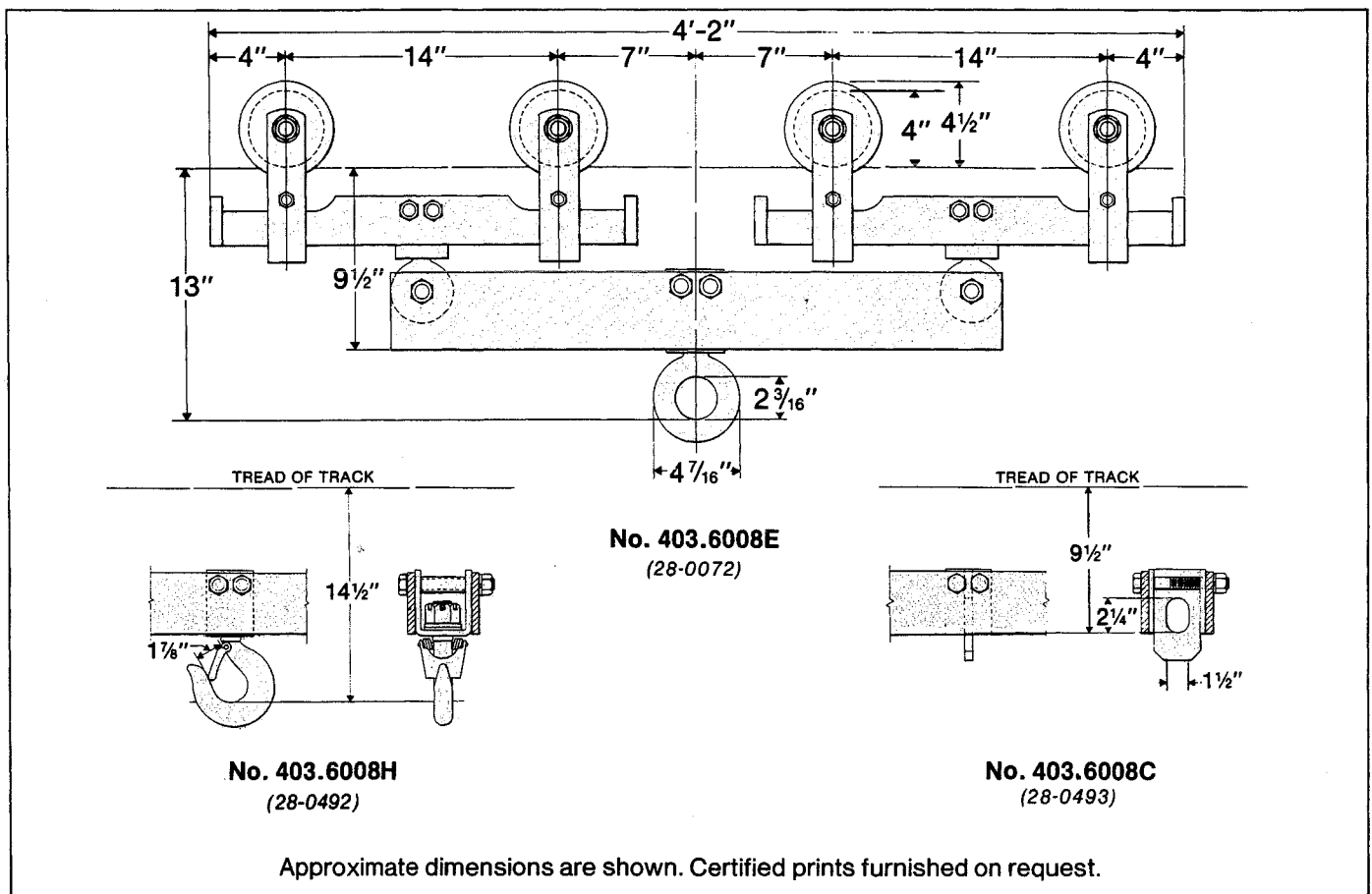
**WARNING:** Equipment described herein is not designed for and should not be used for lifting, supporting or transporting humans. Use of the equipment for this purpose can result in serious bodily injury and/or property damage.



**No. 403.6008E** (28-0072)  
with No. 403.E12 Eye \_\_\_\_ Wt. 105 lbs.

**No. 403.6008H** (28-0492)  
with No. 403.H9 Hook \_\_\_\_ Wt. 107 lbs.

**No. 403.6008C** (28-0493)  
with No. 403.C6 Clevis \_\_\_\_ Wt. 101½ lbs.





**LOUDEN® TROLLEYS**  
**FOR USE WITH 3.33" FLANGE SUPERTRACK™ SYSTEMS**

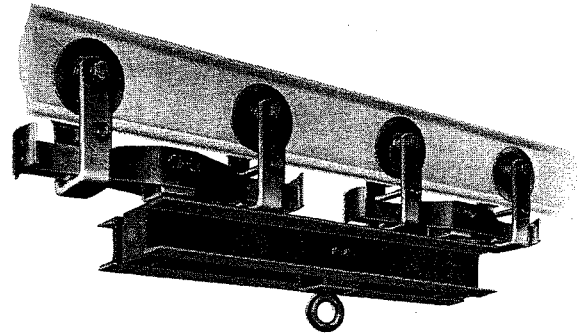
403-10  
 Issued 9-7-01

**10000 lb. Capacity Eight-Wheel Trolley  
 with 28-0882 Wheel Assembly**

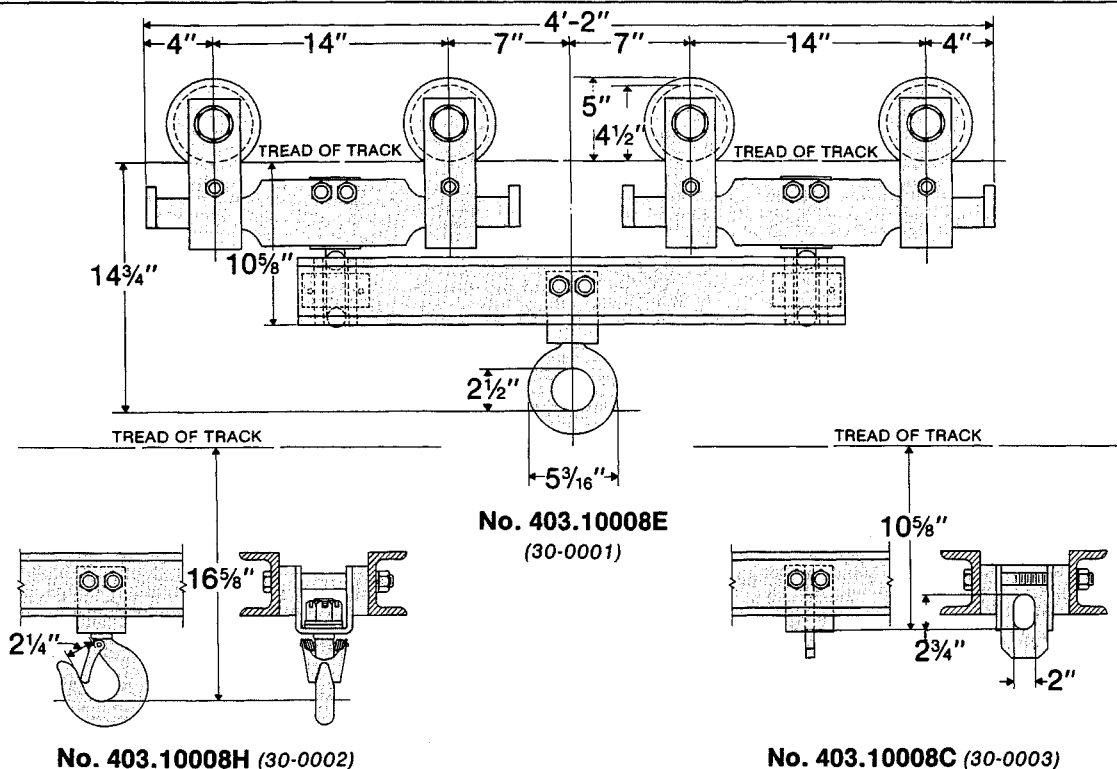
Yokes, loadbars and connecting bar for this trolley are made from formed and rolled steel. Fittings available are drop forged eye, hook or fabricated steel clevis.

For wheel assembly refer to page 400-7.

Options: (a) spark-resistant bronze wheels.  
 (b) flangeless wheels; refer to trolley on page 403-13.



**No. 403.10008E** (30-0001)  
 with No. 403.E14 Eye \_\_\_\_ Wt. 210 lbs.  
**No. 403.10008H** (30-0002)  
 with No. 403.H11 Hook \_\_\_\_ Wt. 215 lbs.  
**No. 403.10008C** (30-0003)  
 with No. 403.C10 Clevis \_\_\_\_ Wt. 209 lbs.  
**No. 403.10008WCS** (30-0174)  
 with Center Spacer \_\_\_\_ Wt. 202 lbs.



Approximate dimensions are shown. Certified prints furnished on request.



**ACCO Material Handling Solutions**  
 76 Acco Drive, Box 792, York, PA 17405-0792  
 717-741-4863, 800-967-7333, FAX 800-715-8897  
 E-mail: info@accmhs.com www.accmhs.com

© 2007 FKI Industries Inc.  
 Printed In USA



**LOUDEN<sup>®</sup> TROLLEYS**  
**FOR USE WITH 3.33" FLANGE SUPERTRACK™ SYSTEMS**

403-11  
Issued 9-7-01

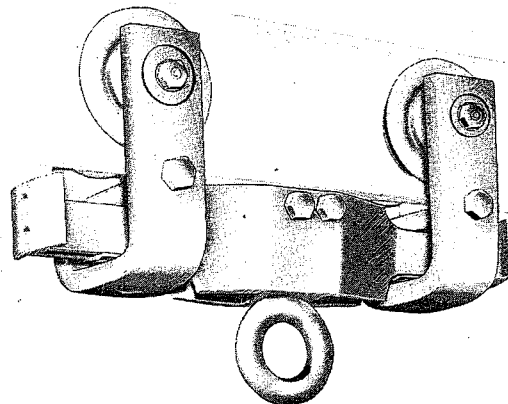
**10000 lb. Capacity Four-Wheel Trolley  
with 28-0593 (PF4370) Wheel Assembly**

Yokes and loadbars for this trolley are made from formed steel. Fittings available are drop forged eye, hook, or fabricated steel clevis.

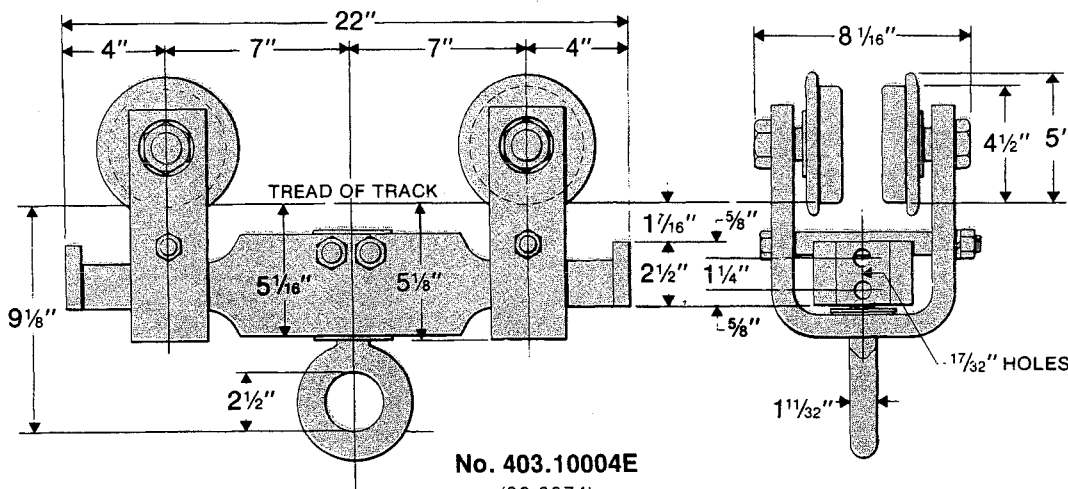
For wheel assembly, refer to page 400-9.

Bronze wheels are optionally available for this trolley assembly.

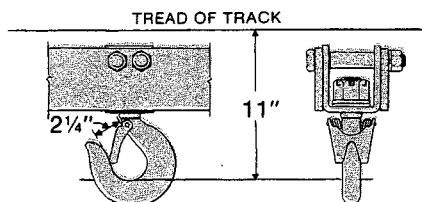
Options: (a) spark-resistant bronze wheels.  
(b) flangeless wheels; refer to trolley on page 403-14.



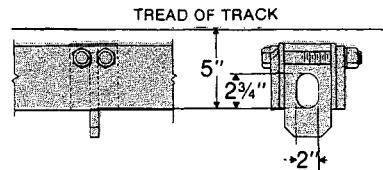
**No. 403.10004E** (28-0074)  
with No. 403.E14 Eye \_\_\_\_ Wt. 82 lbs.  
**No. 403.10004H** (28-0499)  
with No. 403.H11 Hook \_\_\_\_ Wt. 86 lbs.  
**No. 403.10004C** (28-0500)  
with No. 403.C10 Clevis \_\_\_\_ Wt. 81 lbs.  
**No. 403.10004WCS** (28-0498)  
with Center Spacer \_\_\_\_ Wt. 74 lbs.



**No. 403.10004E**  
(28-0074)



**No. 403.10004H**  
(28-0499)



**No. 403.10004C**  
(28-0500)

Approximate dimensions are shown. Certified prints furnished on request.



**LOUDEN® TROLLEYS**  
**FOR USE WITH 3.33" FLANGE SUPERTRACK™ SYSTEMS**

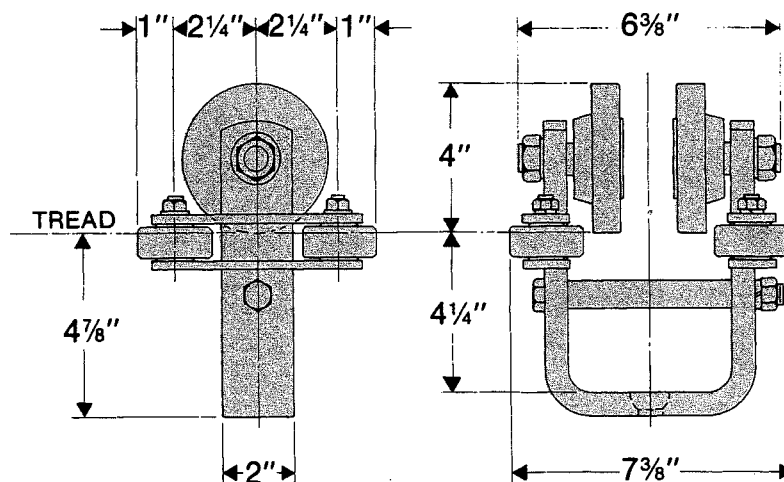
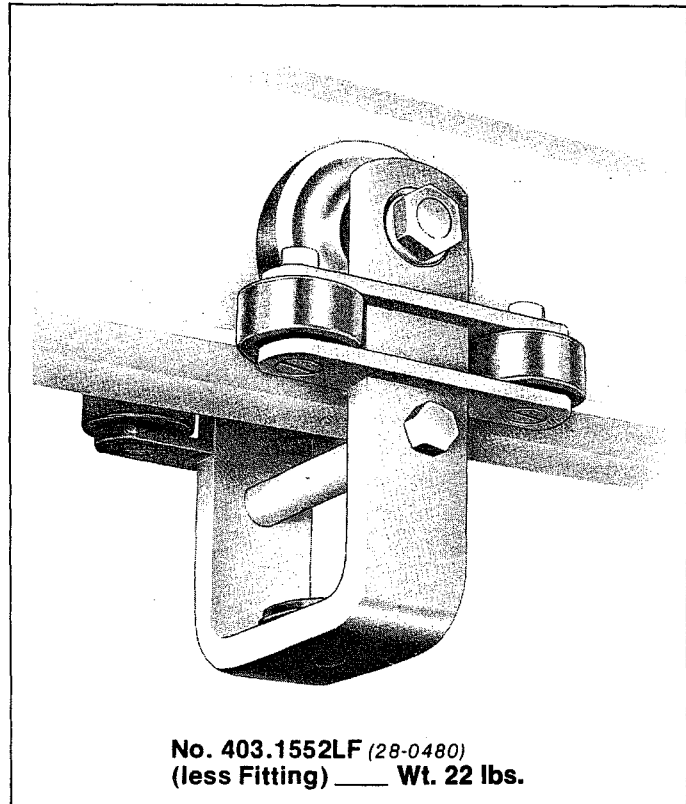
403-12  
Issued 9-7-01

**1500 lb. Capacity Two-Wheel Trolley  
with 28-0879 Flangeless Wheel Assembly  
and Guide Rollers**

This trolley can be substituted for the standard trolleys illustrated on pages 3, 5, and 9 of this 403 section. It is also available as an alternate for trolleys of this capacity on crane trucks, hoist trolleys and special carriers.

Yokes for this assembly are formed steel with welded steel roller brackets. Guide rollers have single row, pre-lubricated and permanently sealed anti-friction bearings, with heavy wall, hardened outer race.

For wheel assembly, refer to page 400-6.



No. 403.1552LF (28-0480)

Approximate dimensions are shown. Certified prints furnished on request.



**ACCO Material Handling Solutions**  
76 Acco Drive, Box 792, York, PA 17405-0792  
717-741-4863, 800-967-7333, FAX 800-715-8897  
E-mail: [info@accomhs.com](mailto:info@accomhs.com) [www.accomhs.com](http://www.accomhs.com)

© 2007 FKI Industries Inc.  
Printed In USA



**LOUDEN® TROLLEYS**  
**FOR USE WITH 3.33" FLANGE SUPERTRACK™ SYSTEMS**

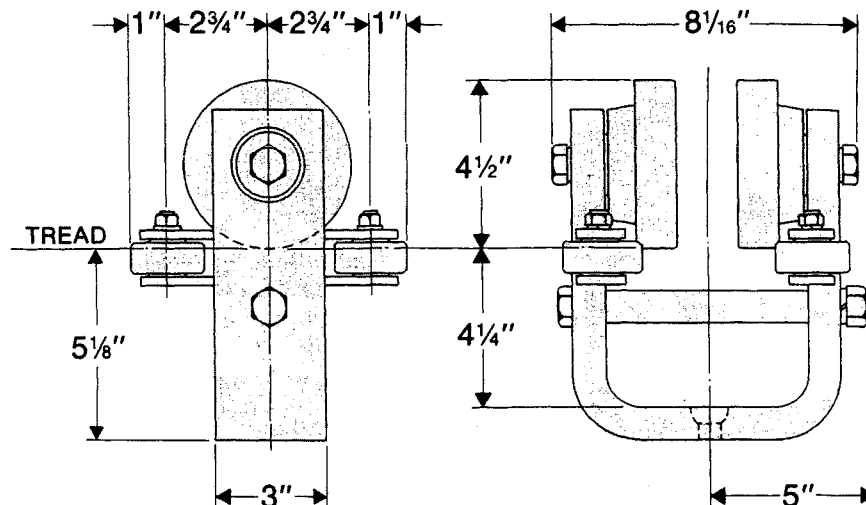
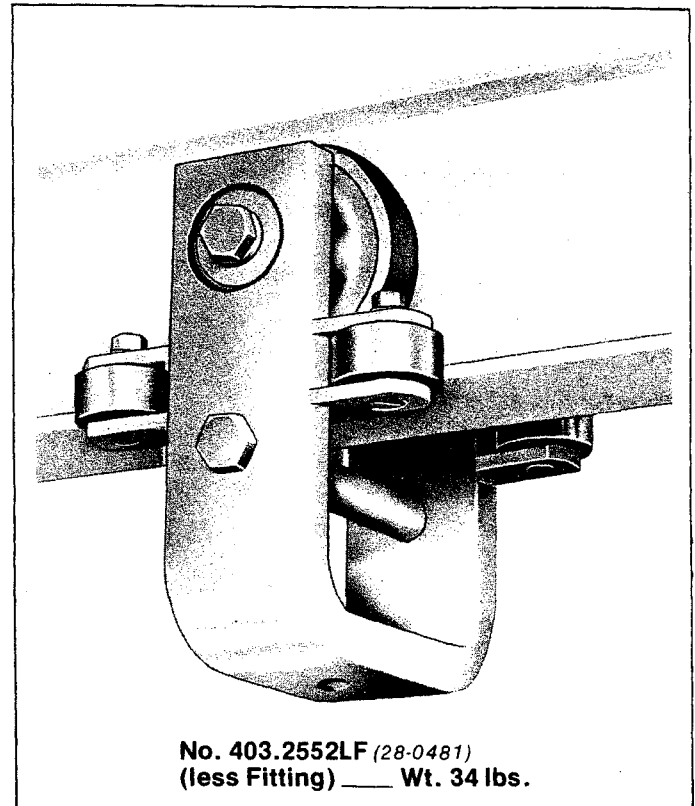
403-13  
Issued 9-7-01

**2500 lb. Capacity Two-Wheel Trolley  
with 28-0881 Flangeless Wheel  
Assembly and Guide Rollers**

This trolley can be substituted for the standard trolleys illustrated on pages 4, 7, and 10 of this 403 section. It is also available as an alternate for trolleys of this capacity on crane trucks, hoist trolleys and special carriers.

Yokes for this assembly are formed steel with welded steel roller bracket. Guide rollers have single row, pre-lubricated and permanently sealed anti-friction bearings, with heavy wall, hardened outer race.

For wheel assembly, refer to page 400-8.



**No. 403.2552LF**  
(28-0481)

Approximate dimensions are shown. Certified prints furnished on request.



**LOUDEN® TROLLEYS**  
**FOR USE WITH 3.33" FLANGE SUPERTRACK™ SYSTEMS**

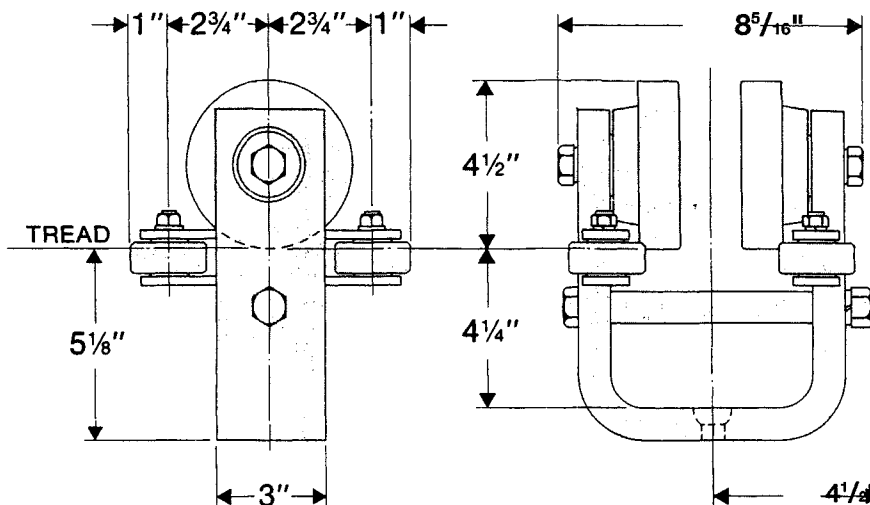
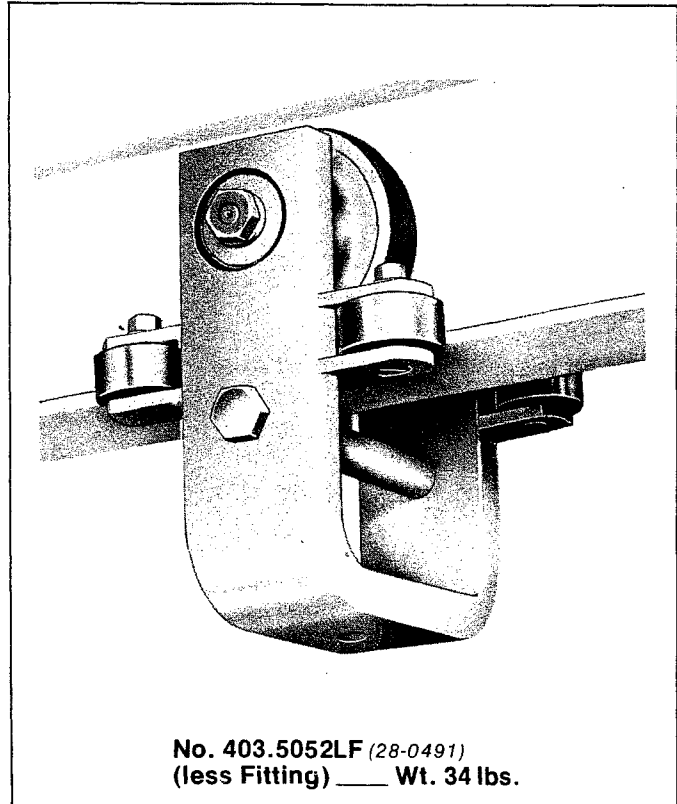
403-14  
Issued 9-7-01

**5000 lb. Capacity Two-Wheel Trolley  
with 28-0595 (PF-4377) Flangeless Wheel  
Assembly and Guide Rollers**

This trolley can be substituted for the standard trolleys illustrated on pages 8 and 11 of this 403 section. It is also available as an alternate for trolleys of this capacity on crane trucks, hoist trolleys, special carriers and Model 3HL MotoVeyor® drive units.

Yokes for this assembly are formed steel with welded steel roller bracket. Guide rollers have single row, pre-lubricated and permanently sealed anti-friction bearings, with heavy wall, hardened outer race.

For wheel assembly, refer to page 400-10.



**No. 403.5052LF**  
(28-0491)

Approximate dimensions are shown. Certified prints furnished on request.



**ACCO Material Handling Solutions**  
76 Acco Drive, Box 792, York, PA 17405-0792  
717-741-4863, 800-967-7333, FAX 800-715-8897  
E-mail: info@accomhs.com www.accomhs.com

© 2007 FKI Industries Inc.  
Printed In USA