

5 TON MONORAIL HOISTS

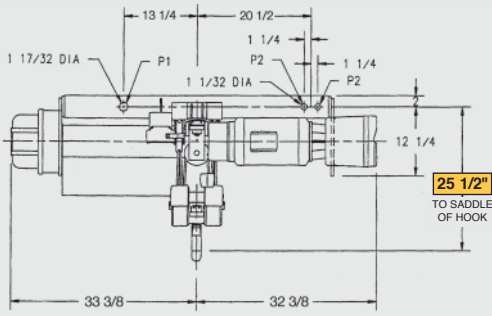


WRIGHT[®]

SPEEDWAY[®] HOISTS

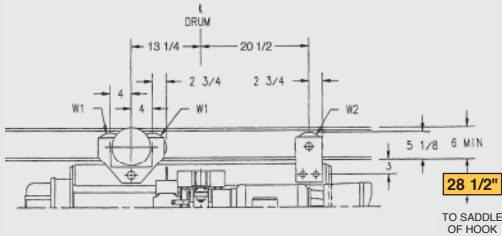
THE NEW CENTURY SERIES[®]

LUG MOUNTED



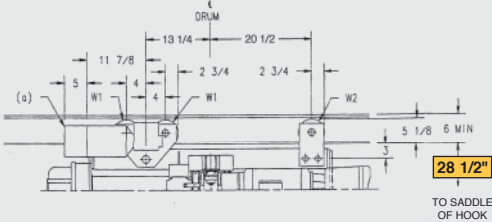
Lift (Ft)	Approx Weight	Pin Load in Lbs. (Max)	
		P1	P2
19'6"	630	6458	2086

PLAIN OR GEARED TROLLEY



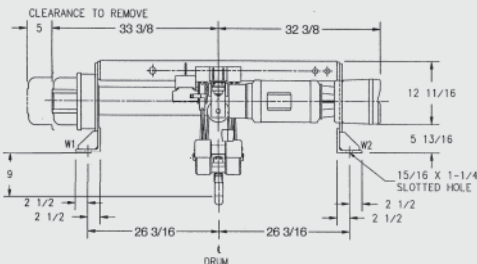
Lift (Ft)	Approx Weight	Wheel Load in Lbs. (Max)	
		PR.W1	PR.W2
19'6"	783	3275	4233

MOTORIZED TROLLEY



Lift (Ft)	Approx Weight	Wheel Load in Lbs. (Max)	
		PR.W1	PR.W2
19'6"	849	3308	4233

DECK MOUNTED



Lift (Ft)	Load in pounds per side	
	W1	W2
19'6"	5257	5439

SPEEDWAY[®] HOISTS

THE NEW CENTURY SERIES[®]

5 Ton



5 Ton monorail SPEEDWAY[®] hoists from WRIGHT[®]

SPEEDWAY[®] hoists are an excellent choice for lower volume lifting with 30 minutes of operation per hour with a maximum of 300 starts an hour as defined by Hoist Duty Class H4 of ASME HST-4.

COMPARE THESE FEATURES

- H-4 duty classification (ASME HST-4)
- Machine cut, case hardened, alloy steel gears
- Steel sheaves in load block
- Single or two speed motors
- Largest oil bath in the industry
- Mechanical load brake
- U.S. manufactured motors
- Motor thermostats
- Motor brake
- Easy maintenance of gears
- Complies with ASME HST-4 both mechanically and electrically

OPTIONAL FEATURES

- Overload cutoff
- Motor fuse holders and fuses
- Geared limit switch
- Variable speed by inverter control
- Bullard hook
- Trolley modifications & speeds
- Operational on patented track
- ACM trolleys and brakes
- Trolley drop down lugs & bumpers
- Tagline tow arm
- Epoxy paints available on application
- Audible or visual hoist overload indicator
- Running time meter
- Many other options available upon application

SERIES	CAPACITY	LIFT	SPEED	REEVING
31	5T	19'6"	12 FPM	4PD



ACCO Material Handling Solutions

76 Acco Drive, Box 792, York, PA 17405-0792

717-741-4863, 800-967-7333, FAX 800-715-8897

E-mail: info@accomhs.com

www.accomhs.com