

A TRADITION RETURNS FOR THE NEW CENTURY



WRIGHT®

SPEEDWAY® HOISTS

THE NEW CENTURY SERIES®

SPEEDWAY[®] HOISTS

THE NEW CENTURY SERIES[®]

Capacities of 1 to 5 tons.

BASIC CONTROLS

Choose single or two speed. Magnetic reversing contactors, both mechanically and electrically interlocked. 115V control circuit. Meets NEC requirements. NEMA Type 3R enclosure. Lightweight, durable, and easily accessible.

MOTOR BRAKE

Proven in millions of hours of in-service operation, the original Wright A-C magnet-actuated disc brake delivers rapid stops with virtually no hook drift. Rated a minimum of 150% of full load motor torque.

MOTOR

The New Century Series utilizes a U.S. manufactured motor, 30-minute duty, Class F insulation. Standard single speed motor is provided for 200V, 230V/460V, or 575V 3 phase, 60 hertz power supplies. Motor thermostats are standard - providing both running and overcurrent protection.

DRUM

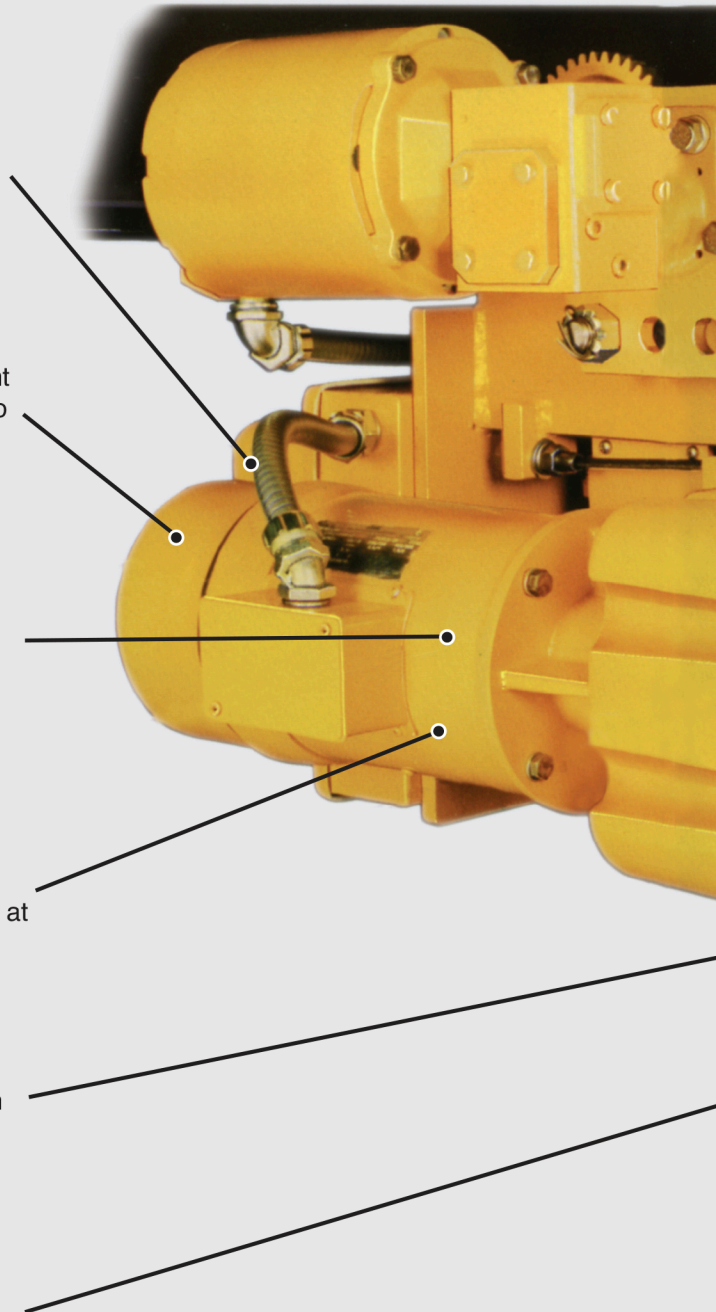
Has machined grooves and large flanges for smooth winding and extended rope life. At least two full turns of rope remain on the drum at the lowest hook position.

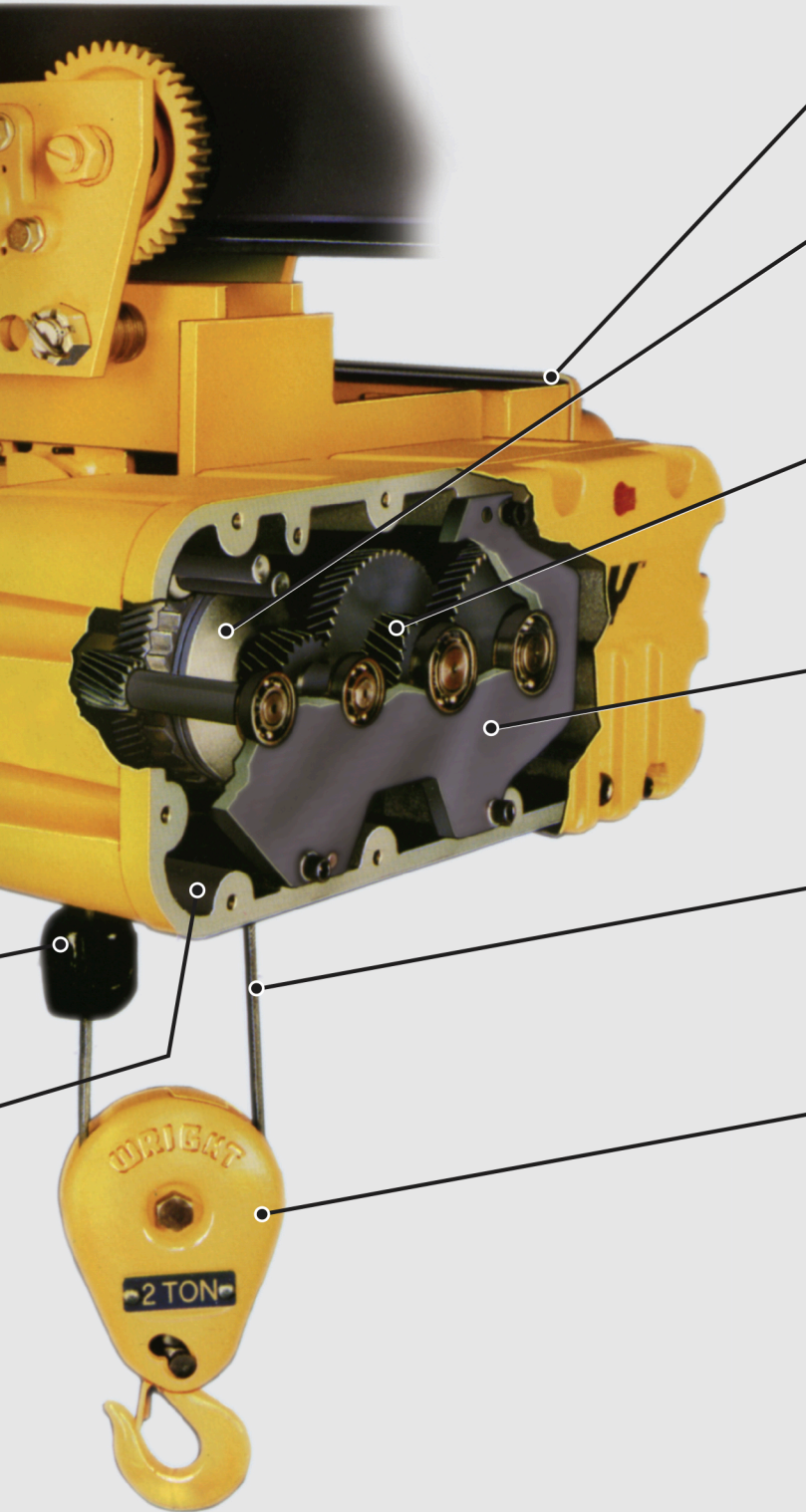
LIMIT SWITCH

A gravity type upper hook travel limit switch comes equipped with an automatic momentary lowering circuit.

LUBRICATION

Gears operate in the largest oil reservoir in the industry and are enclosed in a rugged fluted aluminum alloy housing to provide rapid heat dissipation. Oil sight gauge on the housing cover permits quick visual inspection.





CONTROLS FOR OPTIONAL FEATURES

MECHANICAL LOAD BRAKE

Automatic Weston-Type multiple disc brake. It can hold a full capacity load independent of the motor brake and assures that the load does not accelerate while being lowered. Adjustment is not required.

GEAR TRAIN

Quiet, helical, and spur gearing. All gears are machine cut, case-hardened alloy steel with shock-resistant ductile cores. Designed to AGMA standards.

BEARINGS - SPIDER RETAINER

Precision heavy-duty ball bearings support all shafts. Bearings at outboard end of shafts are held in place by a heavy-duty Spider Retainer. This allows removal of Gear Housing Cover for inspection (after draining oil). All internal parts remain in place and can be operated for inspection.

WIRE ROPE

Pre-formed wire rope, of hoisting service construction, has swaged fittings on both ends for ease of replacement if necessary.

LOAD BLOCK - HOOK

Drop forged heat-treated steel hook swivels 360° on a shielded roller thrust bearing and comes equipped with a spring latch. Work can be performed on the load block without removing wire rope from drum. Sheaves are machined steel with machine finished grooves, to increase surface contact with hoisting rope.

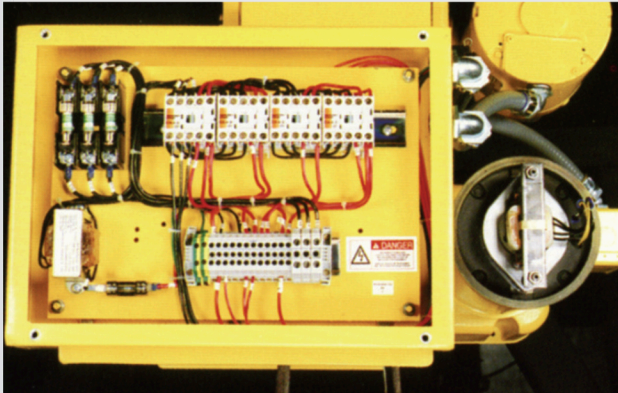
OPTIONAL OVERLOAD CUTOFF

Protects load, hoist, and operator by interrupting raising circuit when hoist senses a damaging overload. When lifting circuit is interrupted, the lowering circuit remains intact to allow the load to be lowered and removed. After the overload is removed the lifting circuit is automatically restored. Overload Cutoff is accessible for field adjustments.

SPEEDWAY[®] HOISTS

THE NEW CENTURY SERIES[®]

Capacities of 1 to 5 tons.



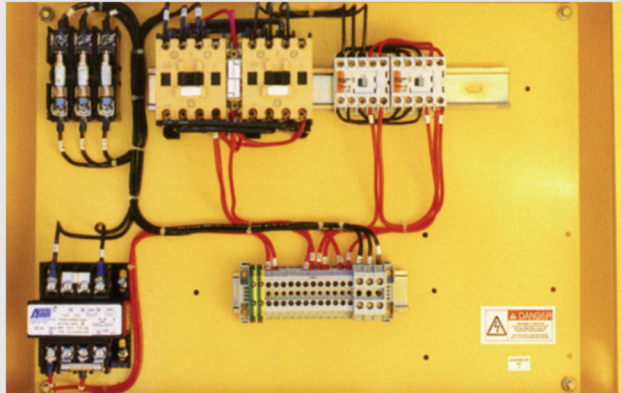
Basic Control Box and Motor Brake

STANDARD FEATURES

- Choose 1, 2, 3, 4, & 5 Ton Capacities
- Standard Speeds and Lifts Readily Available
- Choose Lug, Plain, Geared, or Motorized Trolley or Deck Mounted
- Standard Trolley Speeds Readily Available
- Single and Double Reeved Models Available
- H4 Duty Class
- Single or Two Speed Motors
- Choose 200V, 230V, 460V, or 575V
- Motor Thermostats
- Mechanical Load Brake
- Motor Brake
- Hook Travel Upper Gravity Limit Switch
- 115V Control Circuit
- NEMA 3R Enclosure
- Machine Cut, Case Hardened, Alloy Steel Gears
- Largest Oil Bath in Industry
- Oil Sight Gauge on Housing Cover
- Rugged, Fluted Aluminum Alloy Housing & Cover
- Complies with ASME B30.16 and ASME HST 4M Standards

Other Material Handling Products from ACCO Material Handling Solutions:

- Accolift Hoists
- Accolift Trolleys
- Louden Cranes
- Louden Monorail Systems
- Mansaver Grabs
- Vac-U-Lift Lifters
- Wright Crane Components
- Wright Hand Equipment
- Wright Work-Rated Hoists



Optional Accessory Control Box

OPTIONAL FEATURES

- Overload Cutoff
- Geared Limit Switch
- Motor Fuse Holders and Fuses
- Variable Speed by Inverter Control
- Bullard - Type Hook
- Trolley Modifications & Speeds
- Operational on Patented Track
- ACM Trolleys and Brakes
- Trolley Drop Down Lugs & Bumpers
- Tagline Tow Arm
- Epoxy Paints Available
- Audible or Visual Hoist Overload Indicator
- Running Time Meter
- Class I and Class II Hazardous Location Applications - Contact Factory
- Other Common Options Available

Speedway The New Century Series hoists are designed for operating 30 minutes of each hour with a maximum of 300 starts an hour as defined by Hoist Duty Class H4 of ASME HST-4M.

Wright has been the industry leader in establishing hoist duty ratings and has made certain their hoists met this criteria. The tradition continues with *The New Century Series* of the Speedway hoist line.

All meet ASME HST-4M, both mechanically and electrically.



ACCO Material Handling Solutions

76 Acco Drive, Box 792, York, PA 17405-0792
717-741-4863, 800-967-7333, FAX 800-715-8897
E-mail: info@accomhs.com
www.accomhs.com

© 2014 ACCO Material Handling Solutions, Printed in the USA

Bulletin PD2121
9/14 RMC 2.5M

